

LEA Name : Tredyffrin-Easttown SD
Address : West Valley Business Center
Wayne , PA 19087

County : Chester
AUN Number : 124157802
LEA Type : SD

Annual Financial Report Accuracy Certification Statement

For Fiscal Year Ending
6/30/2020

Pennsylvania Department of Education
&
Office of Comptroller Operations

PDE-2056: Intermediate Unit
PDE-2057: School District, AVTS/CTC, Charter School,
and Special Program Jointure

CERTIFICATION: By signing this page I agree that the electronic data submitted is a complete and accurate statement of the financial operations and status of the local education agency for the fiscal year. It has been prepared in accordance with generally accepted accounting principles and established Commonwealth of PA reporting guidelines.

Chief School Administrator Signature

Date

Board Secretary Signature

Date

Elizabeth Butch

Contact Person

butche@tesd.net

Contact Person E-mail Address

(610)240-1933 Ext :19610

Contact Person Telephone Number

Contact Person Fax Number

Audit Certification
Annual Financial Report:
For Fiscal Year Ending **6/30/2020**
(Pursuant to PA School Code Section 218(b))

LEA Name : Tredyffrin-Easttown SD
AUN Number : 124157802
County : Chester

Audit Certification Due: 12/31/2020

This certification is applicable to the Annual Financial Report data submitted through the Consolidated Financial Reporting System (CFRS).

CERTIFICATION: By signing this page I agree that the financial statements of the school have been properly audited as noted above pursuant to Article XXIV, and in the auditor's professional opinion, the Annual Financial Report (PDE-2057) submitted through CFRS is materially consistent with the audited financial statements.

Chief School Administrator

Board Secretary

Signature

Date

Signature

Date

Elizabeth Butch

Contact Person

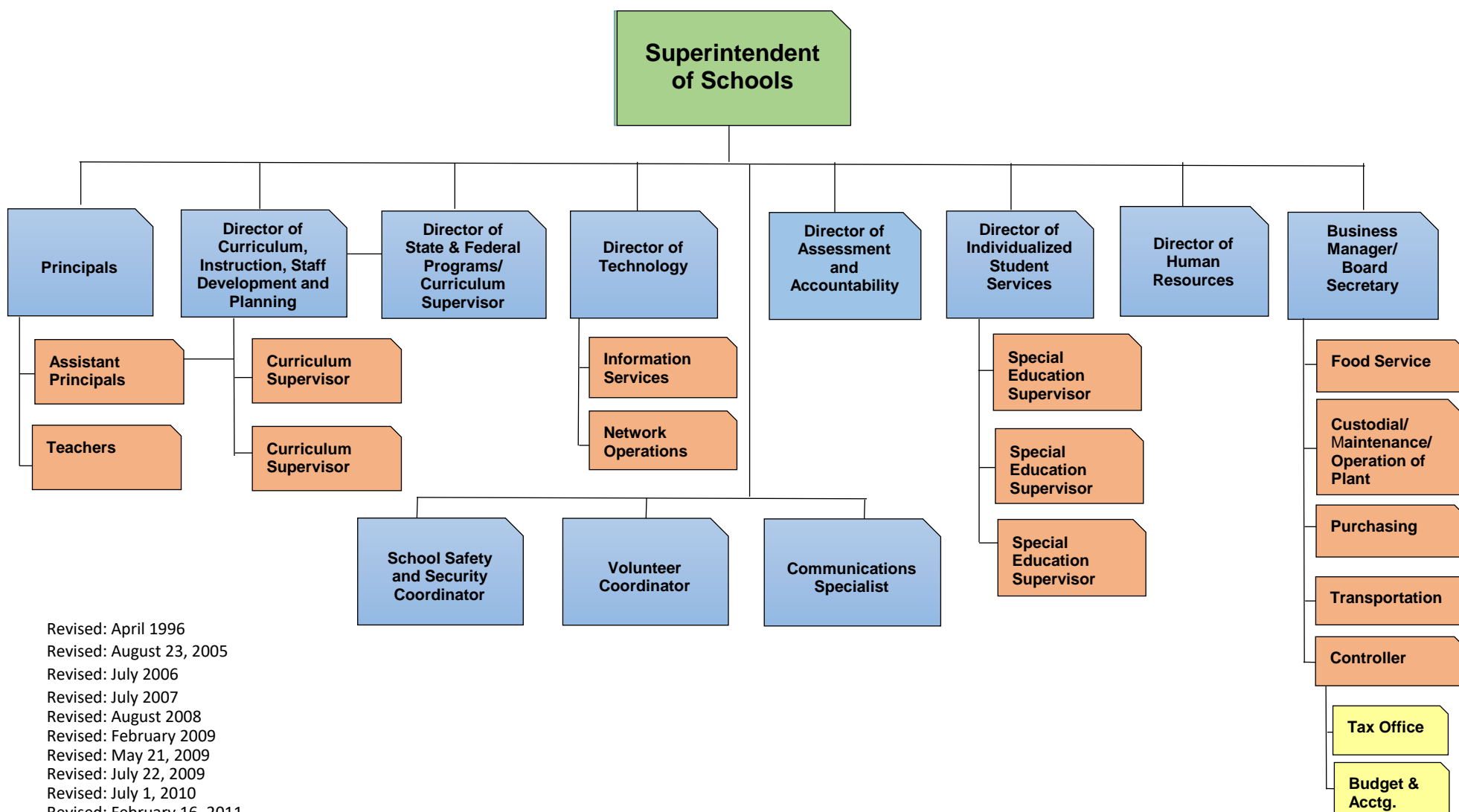
butche@tesd.net

Contact Person E-mail Address

(610)240-1933 Ext :19610

Contact Person Telephone Number

Contact Person Fax Number



Revised: April 1996
 Revised: August 23, 2005
 Revised: July 2006
 Revised: July 2007
 Revised: August 2008
 Revised: February 2009
 Revised: May 21, 2009
 Revised: July 22, 2009
 Revised: July 1, 2010
 Revised: February 16, 2011
 Revised: December 9, 2011
 Revised: May 30, 2012
 Revised: May 20, 2013
 Revised: November 12, 2015
 Revised: July 1, 2017
 Revised: July 2019
 Revised: September 3, 2019

Capital Assets

PURPOSE:

The Board of School Directors recognizes the need to implement required accounting and financial reporting standards promulgated by the Governmental Accounting Standards Board (GASB). Implementation of GASB Statement 34 requires the District to properly record and classify capital assets and to depreciate them over their recognized useful lives.

DEFINITION:

In accordance with GASB Statement 34, capital assets include land, improvements to land, easements, buildings, building additions and improvements, vehicles, machinery, equipment, equipment under lease, furniture, fixtures, works of art, historical treasures and infrastructure. Capital assets are both tangible and intangible assets used in operations, which have initial useful lives extending beyond a single reporting period. Any such capital asset will not change its original shape, appearance or character with use and can be expected to last more than one year with reasonable care and maintenance.

PURCHASED CAPITAL ASSETS:

1. Valuation/Threshold:

Purchased capital assets with a single unit cost greater than or equal to \$1,500.00 or such dollar threshold that is deemed appropriate by the administration, shall be recorded at their historical/original cost. The cost of capital assets should include capitalized interest and ancillary charges necessary to place the asset into service. Ancillary charges include freight, site preparation and professional fees.

Capital assets should be depreciated over their useful lives as determined for each asset class. Capital assets such as land are considered inexhaustible and are, therefore, not subject to depreciation.

When determining historical cost is not practical due to inadequate records, reported asset value shall be based on estimates of original cost at the date of construction or purchase.

Fixed asset records must include the acquisition date, cost, useful life, and depreciation method for appropriate capital asset classifications and groups.

2. Group Assets:

Individual items costing less than the threshold amount, but purchased in quantity such that the aggregate total purchase cost meets or exceeds the threshold, in the amount of \$1,500.00, may be capitalized as a single unit cost, described as a group asset, and depreciated over the useful life for that asset class. Group assets include classroom desks, classroom chairs, classroom textbooks, library books, music instruments, athletic equipment, and uniforms.

Adopted: July, 2004

Tredyffrin/Easttown School District

Replacement group assets are not capitalized nor depreciated.

3. Technology:

Due to changes in technology, computer software and licensing fees are considered supplies and shall be expensed at the time of purchase. If the threshold amount is over \$1,500.00, major computer software purchases, including Point of Sale and Pentamation, are considered Capital Assets and shall be depreciated.

Upon purchase, components such as computer hardware, copiers, facsimile machines, image scanners, and audiovisual equipment shall be considered critical assets, regardless of the single unit cost, capitalized as a Fixed Asset, and depreciated over the useful life as determined for each asset class as deemed appropriate by the administration.

4. Food Service:

Cafeteria, kitchen appliances and food service equipment shall be capitalized when individual items equal or exceed a threshold of \$500.00 and shall be capitalized as a single unit upon purchase when the individual components are less than the capitalization threshold but in the aggregate meet or exceed the threshold of \$500.00, or such dollar threshold that is deemed appropriate by the administration.

DONATED CAPITAL ASSETS:

Donated capital assets must be reported at fair market value plus ancillary charges, if any, at the time of donation. Donated assets are recorded as contributed capital and depreciated over their useful lives as determined for each asset class.

If determining historical costs is not practical due to inadequate records, reporting should be based on estimates of fair market value at the date of donation.

COLLECTIONS:

Art Treasures:

Works of art, historical treasures and similar assets should be capitalized at their historical cost or fair value at date of donation (estimated if necessary) whether they are held as individual items or in a collection.

Capitalized collections or individual items that are exhaustible should be depreciated over their useful lives. Depreciation is not required for collections or individual items that are inexhaustible.

INFRASTRUCTURE DEFINITION:

Infrastructure assets are long-lived capital assets that normally are stationary in nature and can be preserved for a significantly greater number of years than most capital assets. Infrastructure includes school buildings; site improvements such as parking lots, sidewalks, bridges/walkways & portable structures; improvements to computer network and communication systems; interior and exterior construction, including electrical, plumbing, HVAC, sprinkler/fire/alarm, carpeting and roofing installations.

Adopted: July, 2004

Tredyffrin/Easttown School District

2

Infrastructure assets should be depreciated over their useful lives. Routine repairs and maintenance costs are charged to operations as incurred. Expenditures that extend the useful life of the infrastructure are capitalized as an asset and depreciated over the newly established useful life.

DEPRECIATION LIFE TABLE:

Fixed Assets are to be depreciated per the following Depreciation Life Table:

Asset Class	Years	Examples
Outdoor Equipment & Signs	20	Stationary Playground/Athletic Equipment & Fixtures
Machinery & Tools	10	Pottery, Kitchen & Health Room Equipment
Furniture, Equipment & Accessories	5-10	Custodial Equipment/Vacuums, Science/Engineering Equipment, Chalkboard, Markerboard
Business Machines	5	Calculators, Facsimile Machines, Copiers
Communication Systems	5	Telephone System, Two-Way Radios
Computer Hardware	3-5	Palm Pilots, Printers, Image Scanners, PC, File Server, Network
Audiovisual Equipment & Accessories	7	Televisions, VCR/DVD, Laser Disk Players, Cameras, Camcorders, Amplifier/Stereo Mixer, Overhead Projectors, CD/Cassette Recorder Players
Licensed Vehicles	8	Automobiles, Trucks
Contractor Equipment	10	Front-End Loaders, Large Tractors
Ground & Maintenance Equipment	7	Ground & Maintenance Equipment, Mowers, Small Tractors
Infrastructure		
School Buildings	40	School Buildings
Land/Site Improvements	20	Sidewalks, Walk-Ways, Parking Lots, Athletic Fields
Portable Structures	20	Portable Gymnasium Stands, Modular Classrooms
Interior/Exterior Construction	20	Completed Construction
Electrical/Plumbing	20	Electrical/Plumbing Installations
HVAC Systems	20	HVAC Installations
Sprinkler/Fire/Alarm Systems	20	Sprinkler/Fire/Alarm Installations
Roofing	20	Roofing
Stage & Auditorium	20	Stage & Auditorium/Stage Curtain
Carpeting & Vinyl Flooring (New/Replacement)	5	Carpeting & Flooring Installations
Group Assets		
Classroom Desks	10	Classroom Desks
Classroom Chairs	10	Classroom Chairs
Classroom Textbooks & Multi-Media Materials	5	Classroom Textbooks & Multi-Media Materials
Library Books & Multi-Media Materials	5	Library Books & Multi-Media Materials
Athletic Equipment (Portable)	7	Gym/Football Equipment, Weight Machines
Uniforms	5	Athletic, Musical Uniforms
Musical Instruments	10	Piano, Wind, Brass, Percussion Instruments
Traffic Signals	10	Traffic Signals
Land	N/A	Land Acquisition, Grading

DEPRECIATION EXPENSE:

Depreciation is required for the District's capital assets. The District calculates depreciation on all capital assets reported in the District financial statements other than land, permanent improvements to land, and construction-in-progress.

Depreciation is allocated to expense in a systematic and rational manner. The straight-line, mid-month/mid-year convention, method of depreciation is used.

Depreciation may be calculated for a class of assets, group of assets or individual assets.

ASSETS ACQUIRED BY CAPITAL LEASE:

Assets acquired by capital lease are recorded at the net present value of the future minimum lease payments. A corresponding liability is established at this time. Assets acquired under the terms of capital leases are depreciated over the useful lives designated for the asset class.

DISPOSALS:

1. Sale of Capital Assets:
When capital assets are sold they are then removed from the fixed asset list.
2. Trade-ins:
Whenever practical, surplus items are traded-in to reduce the purchase price of replacement items and to avoid costs associated with the storage and sale of surplus items. The traded-in asset must be removed from the books after the items are removed from the building.
3. Terms of sales are as follows:
 - all items sold in "as is" condition
 - cash and carry
 - all sales are final
 - no cash refunds
4. Surplus items that have been deemed to have no value to the School District may be donated to groups or individuals on a first-come, first-served basis prior to disposal.
5. Surplus items deemed to have some value may be disposed of in the following ways with the approval of the Business Administrator:
 - Public Auction
 - Salvage
 - Negotiated Sale (Board Approved)
 - Sealed Bid
 - Trade-in
 - Certified Disposal

6. The Business Administrator must approved the holding of a surplus sale, as well as, the method of sale and a list of items to be offered for sale.
7. Surplus sales must be properly advertised to reach as large a number of potential buyers as possible.
8. Administrators or other employees assigned with building or cost center responsibility are required to review annually all furniture and equipment in their facility or program to determine if any are surplus or obsolete.
9. Textbooks that are deemed to have no sale value will be discarded in a method determined by the Business Administrator.
10. The School District will comply with the Pennsylvania SC 707, 708 and 709 regarding the disposition of real property and the use of the proceeds from any sale.
11. The School District will examine the disposition of real property as it relates to local ordinances and zoning laws, deed restrictions, environmental agency regulations, county or municipal planning commissions, the Department of Education, and/or state or local school building authorities.
12. The School District will use one or more professional appraisers to value real property in order to determine an equitable asking price.

MONITORING:

The District administration will perform periodic tests of randomly selected items to verify that the perpetual inventory system for capital assets is continuing to function properly as designed.

Appraisals will be performed at appropriate intervals, as determined by the administration, to provide a source of information to form a basis for adequate insurance coverage.

<u>Val Number</u>	<u>Description</u>	<u>Justification</u>
30391	Revenue Detail: AFR amount must equal PDE FAI System amount. 7111, AFR Rev Detail: \$3,759,895.64 7111, PDE FAI System: \$3,759,853.97	The difference is \$41.67. On 9/29/2019, the state paid the District \$7.03 for 2015-16 Basic Ed Adj, \$16.26 for 2016-17 Basic Ed Adj and \$18.38 for 2017-18 Basic Ed Adj. We were directed to post these against Revenue 7110
50420	SESS - 2150 Speech Pathology and Audiology Services: SESS Schedule amounts for Special Education vary from prior year by 40% or more. Correct the data or enter a justification. SESS Schedule 2150: \$254.05 Prior Year SESS Schedule 2150: \$885.33	These contracted services are based on annual student needs, which change annually.
50470	SESS - 2440 Nursing Services: SESS Schedule amounts for Special Education vary from prior year by 40% or more. Correct the data or enter a justification. SESS Schedule 2440: \$46,267.23 Prior Year SESS Schedule 2440: \$5,507.74	These contracted services are based on annual student needs, which change annually.

LEA : 124157802 Tredyffrin-Easttown SD

Printed 11/13/2020 9:06:18 AM

Amounts Expressed in Whole Dollars		<u>General Fund</u> <u>(10)</u>	<u>Student Sponsored</u> <u>Activity Fund</u> <u>(21)</u>	<u>Public Purpose Trust</u> <u>(27)</u>	<u>Other Compt Approved</u> <u>(28)</u>	<u>Athletic / Activity</u> <u>(29)</u>
Assets And Deferred Outflows Of Resources						
Assets						
0100	Cash and Cash Equivalents	31,279,701				
0110	Investments	21,149,000				
0120	Taxes Receivable	1,419,869				
0130	Due From Other Funds	741,933				
0141	Due From Other Governments					
0142	State Revenue Receivable	4,705,970				
0143	Federal Revenue Receivable	1,213,217				
0145	Other Intergovernmental Revenue Receivable					
0146	Due from Primary Government					
0147	Due from Component Unit					
0150	Other Receivables	359,637				
0170	Inventories					
0180	Prepaid Expenses (Expenditures)					
0190	Other Current Assets					
Total Assets		\$60,869,327				
0910	Deferred Outflows of Resources					
Total Assets And Deferred Outflows Of Resources		\$60,869,327				

LEA : 124157802 Tredyffrin-Easttown SD

Printed 11/13/2020 9:06:18 AM

Amounts Expressed in Whole Dollars		<u>Capital Reserve (690.</u> <u>1850)</u> <u>(31)</u>	<u>Capital Reserve (1431)</u> <u>(32)</u>	<u>Other Capital Projects</u> <u>Fund</u> <u>(39)</u>	<u>Debt Service</u> <u>(40)</u>	<u>Permanent</u> <u>(90)</u>
Assets And Deferred Outflows Of Resources						
Assets						
0100	Cash and Cash Equivalents		6,901,176	20,438,944		
0110	Investments		10,240,000			
0120	Taxes Receivable					
0130	Due From Other Funds		5,454,290			
0141	Due From Other Governments					
0142	State Revenue Receivable					
0143	Federal Revenue Receivable					
0145	Other Intergovernmental Revenue Receivable					
0146	Due from Primary Government					
0147	Due from Component Unit					
0150	Other Receivables		82,798			
0170	Inventories					
0180	Prepaid Expenses (Expenditures)					
0190	Other Current Assets					
Total Assets			\$22,678,264	\$20,438,944		
0910	Deferred Outflows of Resources					
Total Assets And Deferred Outflows Of Resources			\$22,678,264	\$20,438,944		

LEA : 124157802 Tredyffrin-Easttown SD

Printed 11/13/2020 9:06:18 AM

Amounts Expressed in Whole Dollars		<u>Total Governmental</u>
		<u>Funds</u>
Assets And Deferred Outflows Of Resources		
Assets		
0100	Cash and Cash Equivalents	58,619,821
0110	Investments	31,389,000
0120	Taxes Receivable	1,419,869
0130	Due From Other Funds	6,196,223
0141	Due From Other Governments	
0142	State Revenue Receivable	4,705,970
0143	Federal Revenue Receivable	1,213,217
0145	Other Intergovernmental Revenue Receivable	
0146	Due from Primary Government	
0147	Due from Component Unit	
0150	Other Receivables	442,435
0170	Inventories	
0180	Prepaid Expenses (Expenditures)	
0190	Other Current Assets	
Total Assets		\$103,986,535
0910	Deferred Outflows of Resources	
Total Assets And Deferred Outflows Of Resources		\$103,986,535

LEA : 124157802 Tredyffrin-Easttown SD

Printed 11/13/2020 9:06:18 AM

Amounts Expressed in Whole Dollars	<u>General Fund</u> <u>(10)</u>	<u>Student Sponsored</u> <u>Activity Fund</u> <u>(21)</u>	<u>Public Purpose Trust</u> <u>(27)</u>	<u>Other Compt Approved</u> <u>(28)</u>	<u>Athletic / Activity</u> <u>(29)</u>
Liabilities And Deferred Inflows Of Resources And Fund Balances					
Liabilities					
0400 Due to Other Funds					
0411 Due to Other Governments					
0412 Due to Primary Government					
0413 Due to Component Unit					
0420 Accounts Payable	4,690,859				
0430 Contracts Payable					
0440 Current Portion of Long-Term Debt					
0450 Short-Term Payables					
0461 Accrued Salaries and Benefits	868,612				
0462 Payroll Deductions and Withholding	22,122,588				
0480 Unearned Revenues	1,283,515				
0490 Other Current Liabilities					
Total Liabilities	\$28,965,574				
0950 Deferred Inflows of Resources					
Fund Balances					
0810 Nonspendable Fund Balance					
0820 Restricted Fund Balance					
0830 Committed Fund Balance	31,726,714				
0840 Assigned Fund Balance	177,039				
0850 Unassigned Fund Balance					
Total Fund Balances	\$31,903,753				
Total Liabilities, Deferred Inflows Of Resources And Fund Balances	\$60,869,327				

LEA : 124157802 Tredyffrin-Easttown SD

Printed 11/13/2020 9:06:18 AM

Amounts Expressed in Whole Dollars		<u>Capital Reserve (690.</u> <u>1850)</u> <u>(31)</u>	<u>Capital Reserve (1431)</u> <u>(32)</u>	<u>Other Capital Projects</u> <u>Fund</u> <u>(39)</u>	<u>Debt Service</u> <u>(40)</u>	<u>Permanent</u> <u>(90)</u>
Liabilities And Deferred Inflows Of Resources And Fund Balances						
Liabilities						
0400	Due to Other Funds			5,871,637		
0411	Due to Other Governments					
0412	Due to Primary Government					
0413	Due to Component Unit					
0420	Accounts Payable			2,901,286		
0430	Contracts Payable					
0440	Current Portion of Long-Term Debt					
0450	Short-Term Payables					
0461	Accrued Salaries and Benefits					
0462	Payroll Deductions and Withholding					
0480	Unearned Revenues					
0490	Other Current Liabilities					
Total Liabilities				\$8,772,923		
0950	Deferred Inflows of Resources					
Fund Balances						
0810	Nonspendable Fund Balance					
0820	Restricted Fund Balance		22,678,264			
0830	Committed Fund Balance			11,666,021		
0840	Assigned Fund Balance					
0850	Unassigned Fund Balance					
Total Fund Balances			\$22,678,264	\$11,666,021		
Total Liabilities, Deferred Inflows Of Resources And Fund Balances			\$22,678,264	\$20,438,944		

LEA : 124157802 Tredyffrin-Easttown SD

Printed 11/13/2020 9:06:18 AM

Amounts Expressed in Whole Dollars		<u>Total Governmental</u> <u>Funds</u>
Liabilities And Deferred Inflows Of Resources And Fund Balances		
Liabilities		
0400 Due to Other Funds		5,871,637
0411 Due to Other Governments		
0412 Due to Primary Government		
0413 Due to Component Unit		
0420 Accounts Payable		7,592,145
0430 Contracts Payable		
0440 Current Portion of Long-Term Debt		
0450 Short-Term Payables		
0461 Accrued Salaries and Benefits		868,612
0462 Payroll Deductions and Withholding		22,122,588
0480 Unearned Revenues		1,283,515
0490 Other Current Liabilities		
Total Liabilities		\$37,738,497
0950 Deferred Inflows of Resources		
Fund Balances		
0810 Nonspendable Fund Balance		
0820 Restricted Fund Balance		22,678,264
0830 Committed Fund Balance		43,392,735
0840 Assigned Fund Balance		177,039
0850 Unassigned Fund Balance		
Total Fund Balances		\$66,248,038
Total Liabilities, Deferred Inflows Of Resources And Fund Balances		\$103,986,535

Amounts Expressed in Whole Dollars	<u>General Fund</u> <u>(10)</u>	<u>Student Sponsored</u> <u>Activity Fund</u> <u>(21)</u>	<u>Public Purpose Trust</u> <u>(27)</u>	<u>Other Compt Approved</u> <u>(28)</u>	<u>Athletic / Activity</u> <u>(29)</u>
Revenues					
6000 Revenue from Local Sources	125,729,697				
7000 Revenue from State Sources	22,532,021				
8000 Revenue from Federal Sources	1,110,390				
Total Revenues	\$149,372,108				
Expenditures					
1000 Instruction	91,354,287				
2000 Support Services	43,133,937				
3000 Operation of Non-Instructional Services	1,862,732				
4000 Facilities Acquisition, Construction and Improvement Services					
5110 Debt Service	6,738,748				
5130 Refund of Prior Year Revenues / Receipts	36,120				
Total Expenditures	\$143,125,824				
Excess (Deficiency) Of Revenues Over Expenditures	\$6,246,284				
Other Financing Sources (Uses)					
9110 Face Value of Bonds Issued					
9120 Proceeds from Refunding of Bonds					
9130 Bond Premiums					
9200 Proceeds from Extended-Term Financing					
9300 Interfund Transfers - IN					
9400 Sale of or Compensation for Loss of Fixed Assets					
9710 Transfers from Component Units					
9720 Transfers from Primary Governments					
9910 Other Financing Sources Not Listed in the 9000 Series					
9990 Insurance Recoveries					
5120 Debt Service – Refunded Bonds					
5150 Bond Discounts					
5200 Interfund Transfers – Out	5,200,000				
5300 Transfers Out to Component Units/Primary Governments					
Total Other Financing Sources (Uses)	(\$5,200,000)				

LEA : 124157802 Tredyffrin-Easttown SD

Printed 11/13/2020 9:06:33 AM

Amounts Expressed in Whole Dollars	<u>Capital Reserve (690.1850)</u> <u>(31)</u>	<u>Capital Reserve (1431)</u> <u>(32)</u>	<u>Other Capital Projects</u> <u>Fund</u> <u>(39)</u>	<u>Debt Service</u> <u>(40)</u>	<u>Permanent</u> <u>(90)</u>
Revenues					
6000 Revenue from Local Sources		296,825	370,401		
7000 Revenue from State Sources					
8000 Revenue from Federal Sources					
Total Revenues		\$296,825	\$370,401		
Expenditures					
1000 Instruction					
2000 Support Services					
3000 Operation of Non-Instructional Services					
4000 Facilities Acquisition, Construction and Improvement Services			12,500,872		
5110 Debt Service					
5130 Refund of Prior Year Revenues / Receipts					
Total Expenditures			\$12,500,872		
Excess (Deficiency) Of Revenues Over Expenditures		\$296,825	(\$12,130,471)		
Other Financing Sources (Uses)					
9110 Face Value of Bonds Issued					
9120 Proceeds from Refunding of Bonds					
9130 Bond Premiums					
9200 Proceeds from Extended-Term Financing					
9300 Interfund Transfers - IN		5,200,000			
9400 Sale of or Compensation for Loss of Fixed Assets					
9710 Transfers from Component Units					
9720 Transfers from Primary Governments					
9910 Other Financing Sources Not Listed in the 9000 Series					
9990 Insurance Recoveries					
5120 Debt Service – Refunded Bonds					
5150 Bond Discounts					
5200 Interfund Transfers – Out					
5300 Transfers Out to Component Units/Primary Governments					
Total Other Financing Sources (Uses)		\$5,200,000			

Amounts Expressed in Whole Dollars		<u>Total Governmental Funds</u>
Revenues		
6000	Revenue from Local Sources	126,396,923
7000	Revenue from State Sources	22,532,021
8000	Revenue from Federal Sources	1,110,390
Total Revenues		\$150,039,334
Expenditures		
1000	Instruction	91,354,287
2000	Support Services	43,133,937
3000	Operation of Non-Instructional Services	1,862,732
4000	Facilities Acquisition, Construction and Improvement Services	12,500,872
5110	Debt Service	6,738,748
5130	Refund of Prior Year Revenues / Receipts	36,120
Total Expenditures		\$155,626,696
Excess (Deficiency) Of Revenues Over Expenditures		(\$5,587,362)
Other Financing Sources (Uses)		
9110	Face Value of Bonds Issued	
9120	Proceeds from Refunding of Bonds	
9130	Bond Premiums	
9200	Proceeds from Extended-Term Financing	
9300	Interfund Transfers - IN	5,200,000
9400	Sale of or Compensation for Loss of Fixed Assets	
9710	Transfers from Component Units	
9720	Transfers from Primary Governments	
9910	Other Financing Sources Not Listed in the 9000 Series	
9990	Insurance Recoveries	
5120	Debt Service – Refunded Bonds	
5150	Bond Discounts	
5200	Interfund Transfers – Out	5,200,000
5300	Transfers Out to Component Units/Primary Governments	
Total Other Financing Sources (Uses)		\$0

Amounts Expressed in Whole Dollars	<u>General Fund</u> <u>(10)</u>	<u>Student Sponsored</u> <u>Activity Fund</u> <u>(21)</u>	<u>Public Purpose Trust</u> <u>(27)</u>	<u>Other Compt Approved</u> <u>(28)</u>	<u>Athletic / Activity</u> <u>(29)</u>
Special And Extraordinary Items					
9920 Special Items – Gains					
9930 Extraordinary Items – Gains					
5520 Special Items – Losses					
5530 Extraordinary Items – Losses					
Net Change In Fund Balances	\$1,046,284				
Fund Balance					
0001 Fund Balance - Beginning of Fiscal Year	30,857,468				
Fund Balance - End Of Year	\$31,903,752				

Amounts Expressed in Whole Dollars		<u>Capital Reserve (690.</u> <u>1850)</u> <u>(31)</u>	<u>Capital Reserve (1431)</u> <u>(32)</u>	<u>Other Capital Projects</u> <u>Fund</u> <u>(39)</u>	<u>Debt Service</u> <u>(40)</u>	<u>Permanent</u> <u>(90)</u>
Special And Extraordinary Items						
9920	Special Items – Gains					
9930	Extraordinary Items – Gains					
5520	Special Items – Losses					
5530	Extraordinary Items – Losses					
Net Change In Fund Balances			\$5,496,825	(\$12,130,471)		
Fund Balance						
0001	Fund Balance - Beginning of Fiscal Year		17,181,440	23,796,492		
Fund Balance - End Of Year			\$22,678,265	\$11,666,021		

Amounts Expressed in Whole Dollars		<u>Total Governmental Funds</u>
Special And Extraordinary Items		
9920	Special Items – Gains	
9930	Extraordinary Items – Gains	
5520	Special Items – Losses	
5530	Extraordinary Items – Losses	
Net Change In Fund Balances		(\$5,587,362)
Fund Balance		
0001	Fund Balance - Beginning of Fiscal Year	71,835,400
Fund Balance - End Of Year		\$66,248,038

LEA : 124157802 Tredyffrin-Easttown SD

Printed 11/13/2020 9:06:37 AM

Amounts Expressed in Whole Dollars	<u>Food Service</u> <u>(51)</u>	<u>Child Care</u> <u>Operations</u> <u>(52)</u>	<u>Other Enterprise</u> <u>(58)</u>	<u>TOTAL</u>	<u>Internal Service</u> <u>(60)</u>
Assets And Deferred Outflows Of Resources					
Current Assets					
0100 Cash and Cash Equivalents	888,341			888,341	
0110 Investments					
0130 Due From Other Funds					
0141 Due From Other Governments					
0142 State Revenue Receivable	1,357			1,357	
0143 Federal Revenue Receivable	30,090			30,090	
0146 Due from Primary Government					
0147 Due from Component Unit					
0150 Other Receivables	177			177	
0170 Inventories	61,376			61,376	
0180 Prepaid Expenses (Expenditures)					
0190 Other Current Assets					
Total Current Assets	\$981,341			\$981,341	
Noncurrent Assets					
0211 Land					
0212 Site Improvements (Net)					
0220 Buildings and Building Improvements (Net)					
0230 Machinery, Equipment and Furniture (Net)	342,740			342,740	
0250 Construction in Progress					
0260 Long Term Prepayments					
0290 Other Noncurrent Assets					
Total Noncurrent Assets	\$342,740			\$342,740	
0910 Deferred Outflows of Resources	421,185			421,185	
Total Assets And Deferred Outflows Of Resources	\$1,745,266			\$1,745,266	

LEA : 124157802 Tredyffrin-Easttown SD

Printed 11/13/2020 9:06:37 AM

Amounts Expressed in Whole Dollars	Food Service (51)	Child Care Operations (52)	Other Enterprise (58)	TOTAL	Internal Service (60)
Liabilities And Deferred Inflows Of Resources And Net Position					
Current Liabilities					
0400 Due to Other Funds	324,587			324,587	
0411 Due to Other Governments					
0413 Due to Component Unit					
0420 Accounts Payable	23,496			23,496	
0430 Contracts Payable					
0440 Current Portion of Long-Term Debt					
0450 Short-Term Payables					
0461 Accrued Salaries and Benefits	16,178			16,178	
0462 Payroll Deductions and Withholding	6,796			6,796	
0480 Unearned Revenues	175,887			175,887	
0490 Other Current Liabilities					
Total Current Liabilities	\$546,944			\$546,944	
Noncurrent Liabilities					
0510 Bonds Payable					
0520 Extended-Term Financing Agreements Payable					
0530 Lease-Purchase Obligations					
0540 Accumulated Compensated Absences	53,844			53,844	
0550 Authority Lease Obligations					
0560 Other Post-Employment Benefits (OPEB)	602,378			602,378	
0570 Net Pension Liability	3,128,779			3,128,779	
0599 Other Noncurrent Liabilities					
Total Noncurrent Liabilities	\$3,785,001			\$3,785,001	
Total Liabilities	\$4,331,945			\$4,331,945	
0950 Deferred Inflows of Resources	208,352			208,352	
Net Position					
0791 Net Investment in Capital Assets	342,741			342,741	
0008 Restricted Net Position (0792 – 0798)					
0799 Unrestricted Net Position	(3,137,772)			(3,137,772)	
Total Net Position	(\$2,795,031)			(\$2,795,031)	
Total Liabilities And Deferred Inflows Of Resources And Net Position	\$1,745,266			\$1,745,266	

Amounts Expressed in Whole Dollars	Food Service (51)	Child Care Operations (52)	Other Enterprise (58)	TOTAL	Internal Service (60)
Operating Revenues					
6600 Food Service Revenue	1,722,115			1,722,115	
0071 Charges for Services					
0072 Other Operating Revenue					
Total Operating Revenues	\$1,722,115			\$1,722,115	
Operating Expenses					
100 Personnel Services – Salaries	958,492			958,492	
200 Personnel Services – Employee Benefits	630,952			630,952	
300 Purchased Professional and Technical Services					
400 Purchased Property Services	32,327			32,327	
500 Other Purchased Services	234			234	
600 Supplies	795,759			795,759	
740 Depreciation	64,087			64,087	
810 Dues and Fees	2,188			2,188	
890 Miscellaneous Expenditures					
Total Operating Expenses	\$2,484,039			\$2,484,039	
Operating Income (Loss)	(\$761,924)			(\$761,924)	
Non Operating Revenues (Expenses)					
6500 Earnings on Investments	15,803			15,803	
6920 Contributions and Donations from Private Sources					
6930 Gains or Losses on Sale of Fixed Assets					
6991 Refunds of a Prior Year Expenditure					
7000 Revenue from State Sources	228,455			228,455	
8000 Revenue from Federal Sources	353,560			353,560	
9990 Insurance Recoveries					
820 Claims and Judgments Against the LEA					
830 Interest					
TOTAL Non Operating Revenues (Expenses)	\$597,818			\$597,818	
Income (Loss) Before Contributions And Transfers	(\$164,106)			(\$164,106)	

Amounts Expressed in Whole Dollars	<u>Food Service</u> (51)	<u>Child Care Operations</u> (52)	<u>Other Enterprise</u> (58)	<u>TOTAL</u>	<u>Internal Service</u> (60)
Contributions, Transfers, and Special and Extraordinary Items					
5200 Interfund Transfers – Out					
5300 Transfers Out to Component Units/Primary Governments					
5520 Special Items – Losses					
5530 Extraordinary Items – Losses					
9300 Interfund Transfers - IN					
9500 Capital Contributions					
9700 Transfers IN From Component Units/Primary Governments					
9920 Special Items – Gains					
9930 Extraordinary Items – Gains					
Change In Net Position	(\$164,106)			(\$164,106)	
0002 Net Position - Beginning of Fiscal Year	(2,630,925)			(2,630,925)	
0003 Accounting Changes / Residual Equity Transfers					
Net Position - End Of Year	(\$2,795,031)			(\$2,795,031)	

LEA : 124157802 Tredyffrin-Easttown SD

Printed 11/13/2020 9:06:58 AM

Amounts Expressed in Whole Dollars	Food Service (51)	Child Care Operations (52)	Other Enterprise (58)	TOTAL	Internal Service(60)
Cash Flows From Operating Activities					
0011 Cash Receipts From Users	1,800,928			1,800,928	
0012 Cash Receipts From Assessments Made to Other Funds					
0013 Cash Receipts From Earnings on Investments					
0014 Cash Receipts From Other Operating Revenue					
0015 Cash Payments To Employees For Services	1,431,282			1,431,282	
0016 Cash Payments For Insurance Claims					
0017 Cash Payments To Suppliers For Goods and Services	757,828			757,828	
0018 Cash Payments For Other Operating Expenses					
Net Cash Provided By (Used For) Operating Activities	(\$388,182)			(\$388,182)	
Cash Flows From Non-Capital Financing Activities					
0021 Receipts From Local Sources - 6000					
0022 Receipts From State Sources - 7000	223,267			223,267	
0023 Receipts From Federal Sources -8000	205,645			205,645	
0024 Notes and Loans Received (Repaid)					
0025 Interest Paid on Notes/Loans - 5100-830					
0026 Operating Transfers In (Out)/Residual Equity Trans					
0027 Operating Transfers In (Out) Primary Government / Comp Unit					
0028 Receipts From Refund of Prior Year Expenditures - 6991					
0029 Special and Extraordinary Gains (losses)					
0030 Receipts from Insurance Recoveries -9990					
Net Cash Prov By (Used for) Non-Capital Financing Activities	\$428,912			\$428,912	
Cash Flows From Capital and Related Financing Activities					
0031 Payments For Fac Acq, Const, and Imp - 4000	(35,740)			(35,740)	
0032 Gain / (Loss) on Sale of Fixed Assets - 6930					
0033 Proceeds From Extended Term Financing - 9200					
0034 Principal Paid on Financing Agreements					
0035 Interest Paid on Financing Agreements - 5100-830					
0036 (Inc) Dec in Contributed Capital					
Net Cash Prov By (Used for) Capital and Related Financing Activities	(\$35,740)			(\$35,740)	
Cash Flows From Investing Activities					
0041 Earnings on Investments - 6500	15,803			15,803	
0042 Purchase of Inv Securities / Deposits to Inv Pools					
0043 Receipts From Investment Pool Withdrawals					
0044 Proceeds from Sale and Maturity of Inv Securities					

LEA : 124157802 Tredyffrin-Easttown SD

Printed 11/13/2020 9:06:58 AM

0045 Loans Received (Paid)

Net Cash Prov By (Used for) Investing Activities	\$15,803	\$15,803
--	----------	----------

LEA : 124157802 Tredyffrin-Easttown SD

Printed 11/13/2020 9:06:58 AM

	Food Service (51)	Child Care Operations (52)	Other Enterprise (58)	TOTAL	Internal Service (60)
Net Increase (Decrease) in Cash Flows	20,793			20,793	
0004 Cash and Cash Equivalents Beginning of Year	867,548			867,548	
Cash and Cash Equivalents at Year End	\$888,341			\$888,341	
Reconciliation of Operating Income (Loss) To Net Cash Provided by (Used For) Operating Activities					
0005 Operating Income (Loss) per REP	(761,924)			(761,924)	
Adjustments					
0051 Depreciation and Net Amortization	64,087			64,087	
0052 Provision for Uncollectible Accounts					
0053 Other Adjustments	95,288			95,288	
Effect of Changes in Assets, Liabilities, Deferred Outflows and Deferred Inflows					
0054 (Inc) Dec In Accounts Receivable (0120-0150)	3,715			3,715	
0055 Advances to Other Funds (0160)	288,680			288,680	
0056 (Inc) Dec in Inventories (0170)	(32,453)			(32,453)	
0057 (Inc) Dec in Prepaid Expenses (0180)					
0058 (Inc) Dec in Other Current or Noncurrent Assets					
0064 Deferred Outflows (0910)	111,650			111,650	
0059 Inc (Dec) in Accounts Payable (0400-0450)	9,845			9,845	
0060 Inc (Dec) in Accrued Salaries/Benefits (0461)	(2,243)			(2,243)	
0065 Inc (Dec) in Net Pension Liabilities (0570)	(593,221)			(593,221)	
0066 Inc (Dec) in Other Postemp Benefit Oblig (0560)	259,840			259,840	
0061 Inc (Dec) in Payroll Deductions/Withholding (0462)					
0062 Inc (Dec) in Unearned Revenue (0480)	75,098			75,098	
0063 Inc (Dec) in Other Current or Noncurrent Liabilities					
0067 Deferred Inflows (0950)	93,456			93,456	
Total Adjustments	\$373,742			\$373,742	
Cash Provided By (Used for) Total	(\$388,182)			(\$388,182)	

COMBINED STATEMENT OF CASH FLOWS
SCHEDULE OF NONCASH INVESTING, CAPITAL, AND FINANCING ACTIVITIES

Explanation of Transaction and Balance Sheet Effect	Amount
Total	

LEA : 124157802 Tredyffrin-Easttown SD

Printed 11/13/2020 9:07:01 AM

Amounts Expressed in Whole Dollars		<u>Private Purpose Trust</u> <u>(71)</u>	<u>Investment Trust</u> <u>(72)</u>	<u>Pension Trust</u> <u>(73)</u>	<u>Student Activity Custodial</u> <u>(81)</u>
Assets And Deferred Outflows Of Resources					
Assets					
0100	Cash and Cash Equivalents	67,781			390,106
0110	Investments				
0130	Due From Other Funds				
0140	Due from Other Governments, Primary Government and Component Units				
0150	Other Receivables				
0170	Inventories				
0180	Prepaid Expenses (Expenditures)				
0190	Other Current Assets				
0220	Buildings and Building Improvements (Net)				
0230	Machinery, Equipment and Furniture (Net)				
Total Assets		\$67,781			\$390,106
0910	Deferred Outflows of Resources				
Total Assets And Deferred Outflows Of Resources		\$67,781			\$390,106

LEA : 124157802 Tredyffrin-Easttown SD

Printed 11/13/2020 9:07:01 AM

Amounts Expressed in Whole Dollars		<u>Other Custodial</u> <u>(89)</u>	<u>Fiduciary Component Units</u> <u>(98)</u>	<u>Total Fiduciary Funds</u>
Assets And Deferred Outflows Of Resources				
Assets				
0100	Cash and Cash Equivalents			457,887
0110	Investments			
0130	Due From Other Funds			
0140	Due from Other Governments, Primary Government and Component Units			
0150	Other Receivables			
0170	Inventories			
0180	Prepaid Expenses (Expenditures)			
0190	Other Current Assets			
0220	Buildings and Building Improvements (Net)			
0230	Machinery, Equipment and Furniture (Net)			
Total Assets				\$457,887
0910	Deferred Outflows of Resources			
Total Assets And Deferred Outflows Of Resources				\$457,887

LEA : 124157802 Tredyffrin-Easttown SD

Printed 11/13/2020 9:07:01 AM

Amounts Expressed in Whole Dollars		<u>Private Purpose Trust</u>	<u>Investment Trust</u>	<u>Pension Trust</u>	<u>Student Activity Custodial</u>
		<u>(71)</u>	<u>(72)</u>	<u>(73)</u>	<u>(81)</u>
Liabilities, Deferred Inflows Of Resources And Net Position					
Liabilities					
0400	Due to Other Funds				
0410	Due to Other Governments, Primary Government and Component Units				
0420	Accounts Payable				
0430	Contracts Payable				
0450	Short-Term Payables				
0460	Payroll Accruals and Withholdings				
0480	Unearned Revenues				
0490	Other Current Liabilities				390,106
Total Liabilities					\$390,106
0950	Deferred Inflows of Resources				
Net Position					
0791	Net Investment in Capital Assets				
0009	Restricted Net Position (0792 – 0798)	67,781			
0799	Unrestricted Net Position				
Total Net Position		\$67,781			
Total Liabilities, Deferred Inflows Of Resources And Net Position		\$67,781			\$390,106

LEA : 124157802 Tredyffrin-Easttown SD

Printed 11/13/2020 9:07:01 AM

Amounts Expressed in Whole Dollars		<u>Other Custodial</u>	<u>Fiduciary Component Units</u>	<u>Total Fiduciary Funds</u>
		<u>(89)</u>	<u>(98)</u>	
Liabilities, Deferred Inflows Of Resources And Net Position				
Liabilities				
0400	Due to Other Funds			
0410	Due to Other Governments, Primary Government and Component Units			
0420	Accounts Payable			
0430	Contracts Payable			
0450	Short-Term Payables			
0460	Payroll Accruals and Withholdings			
0480	Unearned Revenues			
0490	Other Current Liabilities			390,106
Total Liabilities				\$390,106
0950	Deferred Inflows of Resources			
Net Position				
0791	Net Investment in Capital Assets			
0009	Restricted Net Position (0792 – 0798)			67,781
0799	Unrestricted Net Position			
Total Net Position				\$67,781
Total Liabilities, Deferred Inflows Of Resources And Net Position				\$457,887

LEA : 124157802 Tredyffrin-Easttown SD

Printed 11/13/2020 9:07:03 AM

Amounts Expressed in Whole Dollars	<u>Private Purpose Trust</u> <u>(71)</u>	<u>Investment Trust</u> <u>(72)</u>	<u>Pension Trust</u> <u>(73)</u>	<u>Student Activity</u> <u>Custodial</u> <u>(81)</u>	<u>Other Custodial</u> <u>(89)</u>	<u>Fiduciary Component</u> <u>Units</u> <u>(98)</u>
Additions						
0091 Gifts and Contributions	36,000					
0095 Net Investment Earnings	713					
0092 Other Additions						
Deductions						
0093 Scholarships Awarded	40,600					
0094 Other Deductions						
Change In Net Position	(\$3,887)					
0006 Net Position – Beginning of Fiscal Year	71,668					
0007 Net Position Held in Trust for Pension Benefits						
Net Position - End of Fiscal Year	\$67,781					

LEA : 124157802 Tredyffrin-Easttown SD

Printed 11/13/2020 9:07:03 AM

Amounts Expressed in Whole Dollars		<u>Total Fiduciary</u>
		<u>Funds</u>
Additions		
0091	Gifts and Contributions	36,000
0095	Net Investment Earnings	713
0092	Other Additions	
Deductions		
0093	Scholarships Awarded	40,600
0094	Other Deductions	
Change In Net Position		(\$3,887)
0006	Net Position – Beginning of Fiscal Year	71,668
0007	Net Position Held in Trust for Pension Benefits	
Net Position - End of Fiscal Year		\$67,781

	Revenue Reported In Current Year	Current Year Tax Accrual	Prior Year Tax Accrual	Taxes Collected In Current Year
Revenue from Local Sources				
6111 Current Real Estate Taxes	115,374,217.20			115,374,217.20
6112 Interim Real Estate Taxes	495,980.37			495,980.37
6113 Public Utility Realty Taxes	102,231.36			102,231.36
6153 Current Act 511 Real Estate Transfer Taxes	4,829,630.39			4,829,630.39
6154 Current Act 511 Amusement Taxes	31,858.84			31,858.84
6411 Delinquent Real Estate Taxes	1,035,290.57			1,035,290.57
6412 Delinquent Interim Real Estate Taxes	2,189.01			2,189.01
6500 Earnings on Investments	2,009,003.03			
6700 Revenues from LEA Activities	240,533.60			
6832 Federal IDEA Revenue Received as Pass Through	938,241.39			
6910 Rentals	521,511.74			
6999 Other Revenues Not Specified Above	149,009.22			
TOTAL Revenue from Local Sources	\$125,729,696.72			\$121,871,397.74

	Revenue Reported In Current Year			
Revenue from State Sources				
7111 Basic Education Funding-Formula	3,759,895.64			
7160 Tuition for Orphans Subsidy	28,418.44			
7271 Special Education funds for School-Aged Pupils	2,478,961.61			
7311 Pupil Transportation Subsidy	1,072,128.98			
7312 Nonpublic and Charter School Pupil Transportation Subsidy	414,645.00			
7320 Rental and Sinking Fund Payments / Building Reimbursement Subsidy	79,169.26			
7330 Health Services (Medical, Dental, Nurse, Act 25)	153,123.50			
7340 State Property Tax Reduction Allocation	2,099,793.02			
7361 School Safety and Security Grants	45,000.00			
7505 Ready to Learn Block Grant	199,614.00			
7810 State Share of Social Security and Medicare Taxes	1,979,774.48			
7820 State Share of Retirement Contributions	10,221,496.78			
TOTAL Revenue from State Sources	\$22,532,020.71			

	Revenue Reported In Current Year			
<u>Revenue from Federal Sources</u>				
8514 NCLB, Title I - Improving the Academic Achievement of the Disadvantaged	236,997.69			
8515 NCLB, Title II - Preparing, Training and Recruiting High Quality Teachers and Principals	92,101.15			
8517 NCLB, Title IV - 21St Century Schools	14,836.22			
8741 Elementary and Secondary School Emergency Relief Fund (ESSER)	194,657.00			
8749 Other CARES Act Funding	80,055.64			
8810 School-Based Access Medicaid Reimbursement Program (SBAP) Reimbursements (Access)	350,000.00			
8820 Medical Assistance Reimbursement for Administrative Claiming (Quarterly) Program	141,742.61			
TOTAL Revenue from Federal Sources	\$1,110,390.31			
TOTAL FROM ALL SOURCES	\$149,372,107.74			\$121,871,397.74

LEA : 124157802 Tredyffrin-Easttown SD

Printed 11/13/2020 9:07:14 AM

	<u>General Fund (10)</u>	<u>Student Sponsored Activity Fund (21)</u>	<u>Public Purpose Trust (27)</u>	<u>Other Compt Approved (28)</u>	<u>Athletic / Activity (29)</u>	<u>Capital Reserve (690, 1850) (31)</u>
6000 Revenue from Local Sources						
6111 Current Real Estate Taxes	115,374,217.20					
6112 Interim Real Estate Taxes	495,980.37					
6113 Public Utility Realty Taxes	102,231.36					
6153 Current Act 511 Real Estate Transfer Taxes	4,829,630.39					
6154 Current Act 511 Amusement Taxes	31,858.84					
6411 Delinquent Real Estate Taxes	1,035,290.57					
6412 Delinquent Interim Real Estate Taxes	2,189.01					
6500 Earnings on Investments	2,009,003.03					
6700 Revenues from LEA Activities	240,533.60					
6832 Federal IDEA Revenue Received as Pass Through	938,241.39					
6910 Rentals	521,511.74					
6999 Other Revenues Not Specified Above	149,009.22					
6000 Total Revenue from Local Sources	\$125,729,696.72					
7000 Revenue from State Sources						
7111 Basic Education Funding-Formula	3,759,895.64					
7160 Tuition for Orphans Subsidy	28,418.44					
7271 Special Education funds for School-Aged Pupils	2,478,961.61					
7311 Pupil Transportation Subsidy	1,072,128.98					
7312 Nonpublic and Charter School Pupil Transportation Subsidy	414,645.00					
7320 Rental and Sinking Fund Payments / Building Reimbursement Subsidy	79,169.26					
7330 Health Services (Medical, Dental, Nurse, Act 25)	153,123.50					
7340 State Property Tax Reduction Allocation	2,099,793.02					
7361 School Safety and Security Grants	45,000.00					
7505 Ready to Learn Block Grant	199,614.00					
7810 State Share of Social Security and Medicare Taxes	1,979,774.48					
7820 State Share of Retirement Contributions	10,221,496.78					
7000 Total Revenue from State Sources	\$22,532,020.71					
8000 Revenue from Federal Sources						
8514 NCLB, Title I - Improving the Academic Achievement of the Disadvantaged	236,997.69					
8515 NCLB, Title II - Preparing, Training and Recruiting High Quality Teachers and Principals	92,101.15					
8517 NCLB, Title IV - 21St Century Schools	14,836.22					
8741 Elementary and Secondary School Emergency Relief Fund (ESSER)	194,657.00					
8749 Other CARES Act Funding	80,055.64					
8810 School-Based Access Medicaid Reimbursement Program (SBAP) Reimbursements (Access)	350,000.00					

LEA : 124157802 Tredyffrin-Easttown SD

Printed 11/13/2020 9:07:14 AM

	Capital Reserve (1431) (32)	Other Capital Projects Fund (39)	Debt Service (40)	Permanent (90)	Total
6000 Revenue from Local Sources					
6111 Current Real Estate Taxes					115,374,217.20
6112 Interim Real Estate Taxes					495,980.37
6113 Public Utility Realty Taxes					102,231.36
6153 Current Act 511 Real Estate Transfer Taxes					4,829,630.39
6154 Current Act 511 Amusement Taxes					31,858.84
6411 Delinquent Real Estate Taxes					1,035,290.57
6412 Delinquent Interim Real Estate Taxes					2,189.01
6500 Earnings on Investments	296,824.63	370,401.22			2,676,228.88
6700 Revenues from LEA Activities					240,533.60
6832 Federal IDEA Revenue Received as Pass Through					938,241.39
6910 Rentals					521,511.74
6999 Other Revenues Not Specified Above					149,009.22
6000 Total Revenue from Local Sources	\$296,824.63	\$370,401.22			\$126,396,922.57
7000 Revenue from State Sources					
7111 Basic Education Funding-Formula					3,759,895.64
7160 Tuition for Orphans Subsidy					28,418.44
7271 Special Education funds for School-Aged Pupils					2,478,961.61
7311 Pupil Transportation Subsidy					1,072,128.98
7312 Nonpublic and Charter School Pupil Transportation Subsidy					414,645.00
7320 Rental and Sinking Fund Payments / Building Reimbursement Subsidy					79,169.26
7330 Health Services (Medical, Dental, Nurse, Act 25)					153,123.50
7340 State Property Tax Reduction Allocation					2,099,793.02
7361 School Safety and Security Grants					45,000.00
7505 Ready to Learn Block Grant					199,614.00
7810 State Share of Social Security and Medicare Taxes					1,979,774.48
7820 State Share of Retirement Contributions					10,221,496.78
7000 Total Revenue from State Sources					\$22,532,020.71
8000 Revenue from Federal Sources					
8514 NCLB, Title I - Improving the Academic Achievement of the Disadvantaged					236,997.69
8515 NCLB, Title II - Preparing, Training and Recruiting High Quality Teachers and Principals					92,101.15
8517 NCLB, Title IV - 21st Century Schools					14,836.22
8741 Elementary and Secondary School Emergency Relief Fund (ESSER)					194,657.00
8749 Other CARES Act Funding					80,055.64
8810 School-Based Access Medicaid Reimbursement Program (SBAP) Reimbursements (Access)					350,000.00

LEA : 124157802 Tredyffrin-Easttown SD

Printed 11/13/2020 9:07:14 AM

	<u>General Fund (10)</u>	<u>Student Sponsored Activity Fund (21)</u>	<u>Public Purpose Trust (27)</u>	<u>Other Compt Approved (28)</u>	<u>Athletic / Activity (29)</u>	<u>Capital Reserve (690, 1850) (31)</u>
8000 Revenue from Federal Sources						
8820 Medical Assistance Reimbursement for Administrative Claiming (Quarterly) Program	141,742.61					
8000 Total Revenue from Federal Sources	\$1,110,390.31					
9000 Other Financing Sources						
9310 General Fund Transfers						
9000 Total Other Financing Sources						
Total From All Sources	\$149,372,107.74					

LEA : 124157802 Tredyffrin-Easttown SD

Printed 11/13/2020 9:07:14 AM

	<u>Capital Reserve</u> <u>(1431) (32)</u>	<u>Other Capital</u> <u>Projects Fund (39)</u>	<u>Debt Service (40)</u>	<u>Permanent (90)</u>	<u>Total</u>
8000 Revenue from Federal Sources					
8820 Medical Assistance Reimbursement for Administrative Claiming (Quarterly) Program					141,742.61
8000 Total Revenue from Federal Sources					\$1,110,390.31
9000 Other Financing Sources					
9310 General Fund Transfers	5,200,000.00				5,200,000.00
9000 Total Other Financing Sources	\$5,200,000.00				\$5,200,000.00
Total From All Sources	\$5,496,824.63	\$370,401.22			\$155,239,333.59

LEA : 124157802 Tredyffrin-Easttown SD

Printed 11/13/2020 9:07:20 AM

	<u>General Fund (10)</u>	<u>Student Sponsored Activity Fund (21)</u>	<u>Public Purpose Trust (27)</u>	<u>Other Compt Approved (28)</u>	<u>Athletic / Activity (29)</u>	<u>Capital Reserve (690. 1850) (31)</u>
Revenue from Local Sources	125,729,696.72					
Revenue from State Sources	22,532,020.71					
Revenue from Federal Sources	1,110,390.31					
Other Financing Sources						
Total From All Sources	\$149,372,107.74					

LEA : 124157802 Tredyffrin-Easttown SD

Printed 11/13/2020 9:07:20 AM

	<u>Capital Reserve (1431)</u> <u>(32)</u>	<u>Other Capital Projects</u> <u>Fund (39)</u>	<u>Debt Service (40)</u>	<u>Permanent (90)</u>	<u>Total</u>
Revenue from Local Sources	296,824.63	370,401.22			126,396,922.57
Revenue from State Sources					22,532,020.71
Revenue from Federal Sources					1,110,390.31
Other Financing Sources	5,200,000.00				5,200,000.00
Total From All Sources	\$5,496,824.63	\$370,401.22			\$155,239,333.59

LEA : 124157802 Tredyffrin-Easttown SD

Printed 11/13/2020 9:07:25 AM

General Fund (10)	
1000 Instruction	<u>Total</u>
100 <u>Personnel Services – Salaries</u>	
100 Personnel Services – Salaries	42,398,792.46
Total Personnel Services – Salaries	\$42,398,792.46
200 <u>Personnel Services – Employee Benefits</u>	
210 Group Insurance – Contracted Provider	7,499,796.18
220 Social Security Contributions	3,174,617.22
230 PSERS Retirement Contributions	14,372,025.31
250 Unemployment Compensation	6,539.27
260 Workers' Compensation	209,578.66
Total Personnel Services – Employee Benefits	\$25,262,556.64
300 <u>Purchased Professional and Technical Services</u>	
310 Official / Administrative Services	23,142.66
322 Professional Educational Services – Ius	8,116,386.15
329 Professional Educational Services – Other	7,035,222.61
340 Technical Services	6,357.00
Total Purchased Professional and Technical Services	\$15,181,108.42
400 <u>Purchased Property Services</u>	
430 Repairs and Maintenance Services	31,293.44
440 Rentals	442,047.57
Total Purchased Property Services	\$473,341.01
500 <u>Other Purchased Services</u>	
510 Student Transportation Services	79,326.35
530 Communications	18,900.12
550 Printing and Binding	27,947.07
561 Tuition To Other School Districts Within the State	153,626.34
562 Tuition To Pennsylvania Charter Schools	610,234.10
563 Tuition To Nonpublic Schools	97,918.93
564 Tuition To Career and Technology Centers	643,503.00
567 Tuition To Approved Private Schools (APS) and PA Chartered Schools for the Deaf and Blind	1,420,742.02
568 Tuition To Private Residential Rehabilitative Institutions (PRRI) [In-State] and Detention Centers	26.85
569 Tuition – Other	1,894,776.67
580 Travel	8,515.08
594 IU Payment By Withholding for Institutionalized Children's Programs – Special Classes	4,011.33
Total Other Purchased Services	\$4,959,527.86
600 <u>Supplies</u>	
610 General Supplies	861,720.11
640 Books and Periodicals	1,436,052.81
Total Supplies	\$2,297,772.92
700 <u>Property</u>	
758 Capitalized Technology Software - Original	465,191.07
768 Capitalized Technology Software - Replacement	293,542.26
Total Property	\$758,733.33

LEA : 124157802 Tredyffrin-Easttown SD

Printed 11/13/2020 9:07:25 AM

General Fund (10)		
1000 Instruction		<u>Total</u>
800 <u>Other Objects</u>		
810 Dues and Fees		22,454.64
Total Other Objects		\$22,454.64
Total 1000 Instruction		\$91,354,287.28

LEA : 124157802 Tredyffrin-Easttown SD

Printed 11/13/2020 9:07:25 AM

General Fund (10)

1100 Regular Programs – Elementary / Secondary	Elementary	Secondary	Federal	Total
100 Personnel Services – Salaries				
100 Personnel Services – Salaries	18,745,529.90	17,346,178.47	204,411.62	36,296,119.99
Total Personnel Services – Salaries	\$18,745,529.90	\$17,346,178.47	\$204,411.62	\$36,296,119.99
200 Personnel Services – Employee Benefits				
210 Group Insurance – Contracted Provider	3,172,540.00	3,190,177.07	46,818.55	6,409,535.62
220 Social Security Contributions	1,405,662.82	1,299,613.69	14,450.38	2,719,726.89
230 PSERS Retirement Contributions	6,364,037.93	5,881,563.27	51,659.30	12,297,260.50
250 Unemployment Compensation	3,190.59	3,190.60		6,381.19
260 Workers' Compensation	89,709.24	89,709.25		179,418.49
Total Personnel Services – Employee Benefits	\$11,035,140.58	\$10,464,253.88	\$112,928.23	\$21,612,322.69
300 Purchased Professional and Technical Services				
329 Professional Educational Services – Other	1,150,263.74	1,193,260.47	57,000.00	2,400,524.21
340 Technical Services	2,250.00	4,107.00		6,357.00
Total Purchased Professional and Technical Services	\$1,152,513.74	\$1,197,367.47	\$57,000.00	\$2,406,881.21
400 Purchased Property Services				
430 Repairs and Maintenance Services	12,745.35	18,548.09		31,293.44
440 Rentals	217,909.97	224,137.60		442,047.57
Total Purchased Property Services	\$230,655.32	\$242,685.69		\$473,341.01
500 Other Purchased Services				
510 Student Transportation Services	33,773.73	45,552.62		79,326.35
530 Communications	1,247.50	17,652.62		18,900.12
550 Printing and Binding	6,020.40	21,926.67		27,947.07
562 Tuition To Pennsylvania Charter Schools	305,117.05	305,117.05		610,234.10
580 Travel	4,808.34	3,706.74		8,515.08
Total Other Purchased Services	\$350,967.02	\$393,955.70		\$744,922.72
600 Supplies				
610 General Supplies	343,748.97	423,611.28	700.00	768,060.25
640 Books and Periodicals	566,305.24	616,974.11		1,183,279.35
Total Supplies	\$910,054.21	\$1,040,585.39	\$700.00	\$1,951,339.60
700 Property				
758 Capitalized Technology Software - Original	123,023.06	132,899.01		255,922.07
768 Capitalized Technology Software - Replacement	120,151.44	171,900.82		292,052.26
Total Property	\$243,174.50	\$304,799.83		\$547,974.33
800 Other Objects				
810 Dues and Fees	5,446.50	17,008.14		22,454.64
Total Other Objects	\$5,446.50	\$17,008.14		\$22,454.64
Total 1100 Regular Programs – Elementary / Secondary	\$32,673,481.77	\$31,006,834.57	\$375,039.85	\$64,055,356.19

LEA : 124157802 Tredyffrin-Easttown SD

Printed 11/13/2020 9:07:25 AM

General Fund (10)

1110 Regular Programs

	Elementary	Secondary	Federal	Total
100 <u>Personnel Services – Salaries</u>				
100 Personnel Services – Salaries	18,745,529.90	17,346,178.47		36,091,708.37
Total Personnel Services – Salaries	\$18,745,529.90	\$17,346,178.47		\$36,091,708.37
200 <u>Personnel Services – Employee Benefits</u>				
210 Group Insurance – Contracted Provider	3,172,540.00	3,190,177.07		6,362,717.07
220 Social Security Contributions	1,405,662.82	1,299,613.69		2,705,276.51
230 PSERS Retirement Contributions	6,364,037.93	5,881,563.27		12,245,601.20
250 Unemployment Compensation	3,190.59	3,190.60		6,381.19
260 Workers' Compensation	89,709.24	89,709.25		179,418.49
Total Personnel Services – Employee Benefits	\$11,035,140.58	\$10,464,253.88		\$21,499,394.46
300 <u>Purchased Professional and Technical Services</u>				
329 Professional Educational Services – Other	1,150,263.74	1,193,260.47		2,343,524.21
340 Technical Services	2,250.00	4,107.00		6,357.00
Total Purchased Professional and Technical Services	\$1,152,513.74	\$1,197,367.47		\$2,349,881.21
400 <u>Purchased Property Services</u>				
430 Repairs and Maintenance Services	12,745.35	18,548.09		31,293.44
440 Rentals	217,909.97	224,137.60		442,047.57
Total Purchased Property Services	\$230,655.32	\$242,685.69		\$473,341.01
500 <u>Other Purchased Services</u>				
510 Student Transportation Services	33,773.73	45,552.62		79,326.35
530 Communications	1,247.50	17,652.62		18,900.12
550 Printing and Binding	6,020.40	21,926.67		27,947.07
562 Tuition To Pennsylvania Charter Schools	305,117.05	305,117.05		610,234.10
580 Travel	4,808.34	3,706.74		8,515.08
Total Other Purchased Services	\$350,967.02	\$393,955.70		\$744,922.72
600 <u>Supplies</u>				
610 General Supplies	343,748.97	423,611.28		767,360.25
640 Books and Periodicals	566,305.24	616,974.11		1,183,279.35
Total Supplies	\$910,054.21	\$1,040,585.39		\$1,950,639.60
700 <u>Property</u>				
758 Capitalized Technology Software - Original	123,023.06	132,899.01		255,922.07
768 Capitalized Technology Software - Replacement	120,151.44	171,900.82		292,052.26
Total Property	\$243,174.50	\$304,799.83		\$547,974.33
800 <u>Other Objects</u>				
810 Dues and Fees	5,446.50	17,008.14		22,454.64
Total Other Objects	\$5,446.50	\$17,008.14		\$22,454.64
Total 1110 Regular Programs	\$32,673,481.77	\$31,006,834.57		\$63,680,316.34

LEA : 124157802 Tredyffrin-Easttown SD

Printed 11/13/2020 9:07:25 AM

General Fund (10)				
1190 Federally-Funded Regular Programs	<u>Elementary</u>	<u>Secondary</u>	<u>Federal</u>	<u>Total</u>
100 <u>Personnel Services – Salaries</u>				
100 Personnel Services – Salaries			204,411.62	204,411.62
Total Personnel Services – Salaries			\$204,411.62	\$204,411.62
200 <u>Personnel Services – Employee Benefits</u>				
210 Group Insurance – Contracted Provider			46,818.55	46,818.55
220 Social Security Contributions			14,450.38	14,450.38
230 PSERS Retirement Contributions			51,659.30	51,659.30
Total Personnel Services – Employee Benefits			\$112,928.23	\$112,928.23
300 <u>Purchased Professional and Technical Services</u>				
329 Professional Educational Services – Other			57,000.00	57,000.00
Total Purchased Professional and Technical Services			\$57,000.00	\$57,000.00
600 <u>Supplies</u>				
610 General Supplies			700.00	700.00
Total Supplies			\$700.00	\$700.00
Total 1190 Federally-Funded Regular Programs			\$375,039.85	\$375,039.85

LEA : 124157802 Tredyffrin-Easttown SD

Printed 11/13/2020 9:07:25 AM

General Fund (10)

1200 Special Programs – Elementary / Secondary	Elementary	Secondary	Federal	Total
100 Personnel Services – Salaries				
100 Personnel Services – Salaries	3,404,109.35	2,569,644.63	96,147.65	6,069,901.63
Total Personnel Services – Salaries	\$3,404,109.35	\$2,569,644.63	\$96,147.65	\$6,069,901.63
200 Personnel Services – Employee Benefits				
210 Group Insurance – Contracted Provider	604,754.72	453,404.49	27,533.16	1,085,692.37
220 Social Security Contributions	253,999.45	191,186.45	7,249.86	452,435.76
230 PSERS Retirement Contributions	1,157,861.75	872,696.95	32,969.01	2,063,527.71
250 Unemployment Compensation	76.23	76.23		152.46
260 Workers' Compensation	15,003.40	15,003.41		30,006.81
Total Personnel Services – Employee Benefits	\$2,031,695.55	\$1,532,367.53	\$67,752.03	\$3,631,815.11
300 Purchased Professional and Technical Services				
310 Official / Administrative Services	11,571.33	11,571.33		23,142.66
322 Professional Educational Services – Ius	3,468,395.10	3,441,146.73	1,206,844.32	8,116,386.15
329 Professional Educational Services – Other	2,317,349.20	2,317,349.20		4,634,698.40
Total Purchased Professional and Technical Services	\$5,797,315.63	\$5,770,067.26	\$1,206,844.32	\$12,774,227.21
500 Other Purchased Services				
561 Tuition To Other School Districts Within the State	76,813.17	76,813.17		153,626.34
563 Tuition To Nonpublic Schools	48,959.46	48,959.47		97,918.93
567 Tuition To Approved Private Schools (APS) and PA Chartered Schools for the Deaf and Blind	710,371.00	710,371.02		1,420,742.02
568 Tuition To Private Residential Rehabilitative Institutions (PRRI) [In-State] and Detention Centers	13.42	13.43		26.85
569 Tuition – Other	947,388.33	947,388.34		1,894,776.67
594 IU Payment By Withholding for Institutionalized Children's Programs – Special Classes	2,005.66	2,005.67		4,011.33
Total Other Purchased Services	\$1,785,551.04	\$1,785,551.10		\$3,571,102.14
600 Supplies				
610 General Supplies	48,457.45	45,202.41		93,659.86
640 Books and Periodicals	106,151.32	105,817.94	40,804.20	252,773.46
Total Supplies	\$154,608.77	\$151,020.35	\$40,804.20	\$346,433.32
700 Property				
758 Capitalized Technology Software - Original	7,306.00	7,306.00	194,657.00	209,269.00
768 Capitalized Technology Software - Replacement	745.00	745.00		1,490.00
Total Property	\$8,051.00	\$8,051.00	\$194,657.00	\$210,759.00
Total 1200 Special Programs – Elementary / Secondary	\$13,181,331.34	\$11,816,701.87	\$1,606,205.20	\$26,604,238.41

LEA : 124157802 Tredyffrin-Easttown SD

Printed 11/13/2020 9:07:25 AM

General Fund (10)

1210 Life Skills Support

	<u>Elementary</u>	<u>Secondary</u>	<u>Federal</u>	<u>Total</u>
100 <u>Personnel Services – Salaries</u>				
100 Personnel Services – Salaries			80,512.92	80,512.92
Total Personnel Services – Salaries			\$80,512.92	\$80,512.92
200 <u>Personnel Services – Employee Benefits</u>				
210 Group Insurance – Contracted Provider			27,533.16	27,533.16
220 Social Security Contributions			6,053.81	6,053.81
230 PSERS Retirement Contributions			27,607.88	27,607.88
250 Unemployment Compensation	76.23	76.23		152.46
260 Workers' Compensation	15,003.40	15,003.41		30,006.81
Total Personnel Services – Employee Benefits	\$15,079.63	\$15,079.64	\$61,194.85	\$91,354.12
300 <u>Purchased Professional and Technical Services</u>				
329 Professional Educational Services – Other	2,317,349.20	2,317,349.20		4,634,698.40
Total Purchased Professional and Technical Services	\$2,317,349.20	\$2,317,349.20		\$4,634,698.40
500 <u>Other Purchased Services</u>				
561 Tuition To Other School Districts Within the State	76,813.17	76,813.17		153,626.34
563 Tuition To Nonpublic Schools	48,959.46	48,959.47		97,918.93
567 Tuition To Approved Private Schools (APS) and PA Chartered Schools for the Deaf and Blind	493,579.36	493,579.38		987,158.74
569 Tuition – Other	947,388.33	947,388.34		1,894,776.67
Total Other Purchased Services	\$1,566,740.32	\$1,566,740.36		\$3,133,480.68
Total 1210 Life Skills Support	\$3,899,169.15	\$3,899,169.20	\$141,707.77	\$7,940,046.12

LEA : 124157802 Tredyffrin-Easttown SD

Printed 11/13/2020 9:07:25 AM

General Fund (10)

1220 Sensory Support

	<u>Elementary</u>	<u>Secondary</u>	<u>Federal</u>	<u>Total</u>
100 <u>Personnel Services – Salaries</u>				
100 Personnel Services – Salaries	262,637.83	31,119.23		293,757.06
Total Personnel Services – Salaries	\$262,637.83	\$31,119.23		\$293,757.06
200 <u>Personnel Services – Employee Benefits</u>				
210 Group Insurance – Contracted Provider	46,968.64	1,000.00		47,968.64
220 Social Security Contributions	19,485.97	2,381.11		21,867.08
230 PSERS Retirement Contributions	88,835.22	10,247.38		99,082.60
Total Personnel Services – Employee Benefits	\$155,289.83	\$13,628.49		\$168,918.32
600 <u>Supplies</u>				
610 General Supplies	409.35			409.35
Total Supplies	\$409.35			\$409.35
Total 1220 Sensory Support	\$418,337.01	\$44,747.72		\$463,084.73

LEA : 124157802 Tredyffrin-Easttown SD

Printed 11/13/2020 9:07:25 AM

General Fund (10)				
1240 Academic Support	<u>Elementary</u>	<u>Secondary</u>	<u>Federal</u>	<u>Total</u>
100 <u>Personnel Services – Salaries</u>				
100 Personnel Services – Salaries	3,141,471.52	2,538,525.40	15,634.73	5,695,631.65
Total Personnel Services – Salaries	\$3,141,471.52	\$2,538,525.40	\$15,634.73	\$5,695,631.65
200 <u>Personnel Services – Employee Benefits</u>				
210 Group Insurance – Contracted Provider	557,786.08	452,404.49		1,010,190.57
220 Social Security Contributions	234,513.48	188,805.34	1,196.05	424,514.87
230 PSERS Retirement Contributions	1,069,026.53	862,449.57	5,361.13	1,936,837.23
Total Personnel Services – Employee Benefits	\$1,861,326.09	\$1,503,659.40	\$6,557.18	\$3,371,542.67
300 <u>Purchased Professional and Technical Services</u>				
310 Official / Administrative Services	11,571.33	11,571.33		23,142.66
Total Purchased Professional and Technical Services	\$11,571.33	\$11,571.33		\$23,142.66
600 <u>Supplies</u>				
610 General Supplies	48,048.10	45,202.41		93,250.51
640 Books and Periodicals	106,151.32	105,817.94	40,804.20	252,773.46
Total Supplies	\$154,199.42	\$151,020.35	\$40,804.20	\$346,023.97
700 <u>Property</u>				
758 Capitalized Technology Software - Original	7,306.00	7,306.00	194,657.00	209,269.00
768 Capitalized Technology Software - Replacement	745.00	745.00		1,490.00
Total Property	\$8,051.00	\$8,051.00	\$194,657.00	\$210,759.00
Total 1240 Academic Support	\$5,176,619.36	\$4,212,827.48	\$257,653.11	\$9,647,099.95

LEA : 124157802 Tredyffrin-Easttown SD

Printed 11/13/2020 9:07:25 AM

General Fund (10)

1241 Learning Support – Public	Elementary	Secondary	Federal	Total
100 <u>Personnel Services – Salaries</u>				
100 Personnel Services – Salaries	2,285,840.83	2,109,288.82	15,634.73	4,410,764.38
Total Personnel Services – Salaries	\$2,285,840.83	\$2,109,288.82	\$15,634.73	\$4,410,764.38
200 <u>Personnel Services – Employee Benefits</u>				
210 Group Insurance – Contracted Provider	405,120.62	376,976.93		782,097.55
220 Social Security Contributions	170,787.61	156,849.49	1,196.05	328,833.15
230 PSERS Retirement Contributions	777,418.20	716,404.95	5,361.13	1,499,184.28
Total Personnel Services – Employee Benefits	\$1,353,326.43	\$1,250,231.37	\$6,557.18	\$2,610,114.98
300 <u>Purchased Professional and Technical Services</u>				
310 Official / Administrative Services	11,571.33	11,571.33		23,142.66
Total Purchased Professional and Technical Services	\$11,571.33	\$11,571.33		\$23,142.66
600 <u>Supplies</u>				
610 General Supplies	46,602.92	43,757.22		90,360.14
640 Books and Periodicals	106,088.82	105,755.44	40,804.20	252,648.46
Total Supplies	\$152,691.74	\$149,512.66	\$40,804.20	\$343,008.60
700 <u>Property</u>				
758 Capitalized Technology Software - Original	7,306.00	7,306.00	194,657.00	209,269.00
768 Capitalized Technology Software - Replacement	745.00	745.00		1,490.00
Total Property	\$8,051.00	\$8,051.00	\$194,657.00	\$210,759.00
Total 1241 Learning Support – Public	\$3,811,481.33	\$3,528,655.18	\$257,653.11	\$7,597,789.62

LEA : 124157802 Tredyffrin-Easttown SD

Printed 11/13/2020 9:07:25 AM

General Fund (10)

1243 Gifted Support

	<u>Elementary</u>	<u>Secondary</u>	<u>Federal</u>	<u>Total</u>
100 <u>Personnel Services – Salaries</u>				
100 Personnel Services – Salaries	855,630.69	429,236.58		1,284,867.27
Total Personnel Services – Salaries	\$855,630.69	\$429,236.58		\$1,284,867.27
200 <u>Personnel Services – Employee Benefits</u>				
210 Group Insurance – Contracted Provider	152,665.46	75,427.56		228,093.02
220 Social Security Contributions	63,725.87	31,955.85		95,681.72
230 PSERS Retirement Contributions	291,608.33	146,044.62		437,652.95
Total Personnel Services – Employee Benefits	\$507,999.66	\$253,428.03		\$761,427.69
600 <u>Supplies</u>				
610 General Supplies	1,445.18	1,445.19		2,890.37
640 Books and Periodicals	62.50	62.50		125.00
Total Supplies	\$1,507.68	\$1,507.69		\$3,015.37
Total 1243 Gifted Support	\$1,365,138.03	\$684,172.30		\$2,049,310.33

LEA : 124157802 Tredyffrin-Easttown SD

Printed 11/13/2020 9:07:25 AM

General Fund (10)

1280 Early Intervention Support

300 Purchased Professional and Technical Services

	<u>Elementary</u>	<u>Secondary</u>	<u>Federal</u>	<u>Total</u>
322 Professional Educational Services – lus	27,248.37			27,248.37
Total Purchased Professional and Technical Services	\$27,248.37			\$27,248.37
Total 1280 Early Intervention Support	\$27,248.37			\$27,248.37

LEA : 124157802 Tredyffrin-Easttown SD

Printed 11/13/2020 9:07:25 AM

General Fund (10)

1290 Special Programs - Other Support

	<u>Elementary</u>	<u>Secondary</u>	<u>Federal</u>	<u>Total</u>
300 <u>Purchased Professional and Technical Services</u>				
322 Professional Educational Services – Ius	3,441,146.73	3,441,146.73	1,206,844.32	8,089,137.78
Total Purchased Professional and Technical Services	\$3,441,146.73	\$3,441,146.73	\$1,206,844.32	\$8,089,137.78
500 <u>Other Purchased Services</u>				
567 Tuition To Approved Private Schools (APS) and PA Chartered Schools for the Deaf and Blind	216,791.64	216,791.64		433,583.28
568 Tuition To Private Residential Rehabilitative Institutions (PRRI) [In-State] and Detention Centers	13.42	13.43		26.85
594 IU Payment By Withholding for Institutionalized Children's Programs – Special Classes	2,005.66	2,005.67		4,011.33
Total Other Purchased Services	\$218,810.72	\$218,810.74		\$437,621.46
Total 1290 Special Programs - Other Support	\$3,659,957.45	\$3,659,957.47	\$1,206,844.32	\$8,526,759.24

LEA : 124157802 Tredyffrin-Easttown SD

Printed 11/13/2020 9:07:25 AM

General Fund (10)

1300 Vocational Education

500 Other Purchased Services

	<u>Elementary</u>	<u>Secondary</u>	<u>Federal</u>	<u>Total</u>
564 Tuition To Career and Technology Centers		643,503.00		643,503.00
Total Other Purchased Services		\$643,503.00		\$643,503.00
Total 1300 Vocational Education		\$643,503.00		\$643,503.00

LEA : 124157802 Tredyffrin-Easttown SD

Printed 11/13/2020 9:07:25 AM

General Fund (10)

1400 Other Instructional Programs – Elementary / Secondary	<u>Elementary</u>	<u>Secondary</u>	<u>Federal</u>	<u>Total</u>
100 Personnel Services – Salaries				
100 Personnel Services – Salaries	2,942.50	29,828.34		32,770.84
Total Personnel Services – Salaries	\$2,942.50	\$29,828.34		\$32,770.84
200 Personnel Services – Employee Benefits				
210 Group Insurance – Contracted Provider		4,568.19		4,568.19
220 Social Security Contributions	221.13	2,233.44		2,454.57
230 PSERS Retirement Contributions	1,008.99	10,228.11		11,237.10
250 Unemployment Compensation		5.62		5.62
260 Workers' Compensation		153.36		153.36
Total Personnel Services – Employee Benefits	\$1,230.12	\$17,188.72		\$18,418.84
Total 1400 Other Instructional Programs – Elementary / Secondary	\$4,172.62	\$47,017.06		\$51,189.68

LEA : 124157802 Tredyffrin-Easttown SD

Printed 11/13/2020 9:07:25 AM

General Fund (10)

1410 Drivers' Education

	<u>Elementary</u>	<u>Secondary</u>	<u>Federal</u>	<u>Total</u>
100 <u>Personnel Services – Salaries</u>				
100 Personnel Services – Salaries		26,885.84		26,885.84
Total Personnel Services – Salaries		\$26,885.84		\$26,885.84
200 <u>Personnel Services – Employee Benefits</u>				
210 Group Insurance – Contracted Provider		4,568.19		4,568.19
220 Social Security Contributions		2,012.30		2,012.30
230 PSERS Retirement Contributions		9,219.12		9,219.12
250 Unemployment Compensation		5.62		5.62
260 Workers' Compensation		153.36		153.36
Total Personnel Services – Employee Benefits		\$15,958.59		\$15,958.59
Total 1410 Drivers' Education		\$42,844.43		\$42,844.43

LEA : 124157802 Tredyffrin-Easttown SD

Printed 11/13/2020 9:07:25 AM

General Fund (10)				
1430 Homebound Instruction	<u>Elementary</u>	<u>Secondary</u>	<u>Federal</u>	<u>Total</u>
100 <u>Personnel Services – Salaries</u>				
100 Personnel Services – Salaries	2,942.50	2,942.50		5,885.00
Total Personnel Services – Salaries	\$2,942.50	\$2,942.50		\$5,885.00
200 <u>Personnel Services – Employee Benefits</u>				
220 Social Security Contributions	221.13	221.14		442.27
230 PSERS Retirement Contributions	1,008.99	1,008.99		2,017.98
Total Personnel Services – Employee Benefits	\$1,230.12	\$1,230.13		\$2,460.25
Total 1430 Homebound Instruction	\$4,172.62	\$4,172.63		\$8,345.25

LEA : 124157802 Tredyffrin-Easttown SD

Printed 11/13/2020 9:07:34 AM

General Fund (10)

2000 Support Services

Total

100	<u>Personnel Services – Salaries</u>	
100	Personnel Services – Salaries	18,017,820.86
Total Personnel Services – Salaries		\$18,017,820.86
200	<u>Personnel Services – Employee Benefits</u>	
210	Group Insurance – Contracted Provider	3,362,157.91
220	Social Security Contributions	1,228,239.20
230	PSERS Retirement Contributions	5,878,272.80
240	Tuition Reimbursement	264,341.14
250	Unemployment Compensation	901.64
260	Workers' Compensation	102,750.62
299	All Other Employee Benefits	21,564.47
Total Personnel Services – Employee Benefits		\$10,858,227.78
300	<u>Purchased Professional and Technical Services</u>	
322	Professional Educational Services – Ius	13,774.30
329	Professional Educational Services – Other	468,268.09
330	Other Professional Services	584,827.55
340	Technical Services	425,455.43
350	Security / Safety Services	3,046.25
390	Other Purchased Professional and Technical Services	179,582.10
Total Purchased Professional and Technical Services		\$1,674,953.72
400	<u>Purchased Property Services</u>	
410	Cleaning Services	93,282.29
420	Utility Services	939,075.47
430	Repairs and Maintenance Services	1,481,789.76
440	Rentals	231,225.51
Total Purchased Property Services		\$2,745,373.03
500	<u>Other Purchased Services</u>	
513	Contracted Carriers	6,390,139.31
516	Student Transportation Services From the IU	7,237.19
520	Insurance – General	331,240.44
522	Automotive Liability Insurance	35,340.00
523	General Property and Liability Insurance	93,992.56
530	Communications	275,551.49
541	Advertising Related to Federal Grant Awards	12,121.84
549	Other Advertising/Public Relations	10,640.84
550	Printing and Binding	23,753.76
580	Travel	47,522.07
595	IU Payments By Withholding	71,256.02
Total Other Purchased Services		\$7,298,795.52
600	<u>Supplies</u>	
610	General Supplies	883,789.88
620	Energy	692,568.11
630	Food	2,905.20
640	Books and Periodicals	685,250.42

LEA : 124157802 Tredyffrin-Easttown SD

Printed 11/13/2020 9:07:34 AM

General Fund (10)

2000 Support Services

Total

Total Supplies		\$2,264,513.61
700 <u>Property</u>		
758 Capitalized Technology Software - Original		73,980.24
768 Capitalized Technology Software - Replacement		132,633.75
Total Property		\$206,613.99
800 <u>Other Objects</u>		
810 Dues and Fees		67,638.43
Total Other Objects		\$67,638.43
Total 2000 Support Services		\$43,133,936.94

LEA : 124157802 Tredyffrin-Easttown SD

Printed 11/13/2020 9:07:34 AM

General Fund (10)

2100 Support Services – Students	Elementary	Secondary	Federal	Total
100 <u>Personnel Services – Salaries</u>				
100 Personnel Services – Salaries	1,374,854.93	2,009,084.84		3,419,620.05
Total Personnel Services – Salaries	\$1,374,854.93	\$2,009,084.84		\$3,419,620.05
200 <u>Personnel Services – Employee Benefits</u>				
210 Group Insurance – Contracted Provider	194,389.46	294,619.95		498,298.85
220 Social Security Contributions	99,964.28	146,601.00		249,257.95
230 PSERS Retirement Contributions	455,804.39	661,139.37		1,129,058.29
250 Unemployment Compensation	71.39	71.39		142.78
260 Workers' Compensation	8,833.77	8,833.77		17,667.54
Total Personnel Services – Employee Benefits	\$759,063.29	\$1,111,265.48		\$1,894,425.41
300 <u>Purchased Professional and Technical Services</u>				
329 Professional Educational Services – Other	41,633.21	41,633.21		83,266.42
340 Technical Services	3,534.20	3,534.20		7,068.40
Total Purchased Professional and Technical Services	\$45,167.41	\$45,167.41		\$90,334.82
400 <u>Purchased Property Services</u>				
430 Repairs and Maintenance Services		3,723.79		3,723.79
Total Purchased Property Services		\$3,723.79		\$3,723.79
500 <u>Other Purchased Services</u>				
550 Printing and Binding	3,205.41	3,205.42		6,410.83
580 Travel	1,994.69	1,994.69		3,989.38
Total Other Purchased Services	\$5,200.10	\$5,200.11		\$10,400.21
600 <u>Supplies</u>				
610 General Supplies	10,619.48	18,417.80		29,037.28
640 Books and Periodicals	523.25	8,299.20		8,822.45
Total Supplies	\$11,142.73	\$26,717.00		\$37,859.73
700 <u>Property</u>				
758 Capitalized Technology Software - Original	4,692.21	4,692.21		9,384.42
Total Property	\$4,692.21	\$4,692.21		\$9,384.42
800 <u>Other Objects</u>				
810 Dues and Fees		845.00		845.00
Total Other Objects		\$845.00		\$845.00
Total 2100 Support Services – Students	\$2,200,120.67	\$3,206,695.84		\$5,466,593.43

LEA : 124157802 Tredyffrin-Easttown SD

Printed 11/13/2020 9:07:34 AM

General Fund (10)

2110 Supervision of Student Services	Elementary	Secondary	Federal	Total
100 <u>Personnel Services – Salaries</u>				
100 Personnel Services – Salaries	374,351.59	427,114.06		801,465.65
Total Personnel Services – Salaries	\$374,351.59	\$427,114.06		\$801,465.65
200 <u>Personnel Services – Employee Benefits</u>				
210 Group Insurance – Contracted Provider	31,611.45	51,511.06		83,122.51
220 Social Security Contributions	25,330.13	29,218.84		54,548.97
230 PSERS Retirement Contributions	116,412.08	134,504.34		250,916.42
250 Unemployment Compensation	71.39	71.39		142.78
260 Workers' Compensation	8,833.77	8,833.77		17,667.54
Total Personnel Services – Employee Benefits	\$182,258.82	\$224,139.40		\$406,398.22
300 <u>Purchased Professional and Technical Services</u>				
340 Technical Services	3,534.20	3,534.20		7,068.40
Total Purchased Professional and Technical Services	\$3,534.20	\$3,534.20		\$7,068.40
500 <u>Other Purchased Services</u>				
550 Printing and Binding	3,205.41	3,205.42		6,410.83
580 Travel	1,866.25	1,866.25		3,732.50
Total Other Purchased Services	\$5,071.66	\$5,071.67		\$10,143.33
600 <u>Supplies</u>				
610 General Supplies	7,540.99	7,541.00		15,081.99
Total Supplies	\$7,540.99	\$7,541.00		\$15,081.99
700 <u>Property</u>				
758 Capitalized Technology Software - Original	600.00	600.00		1,200.00
Total Property	\$600.00	\$600.00		\$1,200.00
Total 2110 Supervision of Student Services	\$573,357.26	\$668,000.33		\$1,241,357.59

LEA : 124157802 Tredyffrin-Easttown SD

Printed 11/13/2020 9:07:34 AM

General Fund (10)

2111 Supervision of Student Services – Head of Component	Elementary	Secondary	Federal	Total
100 <u>Personnel Services – Salaries</u>				
100 Personnel Services – Salaries	374,351.59	427,114.06		801,465.65
Total Personnel Services – Salaries	\$374,351.59	\$427,114.06		\$801,465.65
200 <u>Personnel Services – Employee Benefits</u>				
210 Group Insurance – Contracted Provider	31,611.45	51,511.06		83,122.51
220 Social Security Contributions	25,330.13	29,218.84		54,548.97
230 PSERS Retirement Contributions	116,412.08	134,504.34		250,916.42
250 Unemployment Compensation	71.39	71.39		142.78
260 Workers' Compensation	8,833.77	8,833.77		17,667.54
Total Personnel Services – Employee Benefits	\$182,258.82	\$224,139.40		\$406,398.22
300 <u>Purchased Professional and Technical Services</u>				
340 Technical Services	3,534.20	3,534.20		7,068.40
Total Purchased Professional and Technical Services	\$3,534.20	\$3,534.20		\$7,068.40
500 <u>Other Purchased Services</u>				
550 Printing and Binding	3,205.41	3,205.42		6,410.83
580 Travel	1,866.25	1,866.25		3,732.50
Total Other Purchased Services	\$5,071.66	\$5,071.67		\$10,143.33
600 <u>Supplies</u>				
610 General Supplies	7,540.99	7,541.00		15,081.99
Total Supplies	\$7,540.99	\$7,541.00		\$15,081.99
700 <u>Property</u>				
758 Capitalized Technology Software - Original	600.00	600.00		1,200.00
Total Property	\$600.00	\$600.00		\$1,200.00
Total 2111 Supervision of Student Services – Head of Component	\$573,357.26	\$668,000.33		\$1,241,357.59

LEA : 124157802 Tredyffrin-Easttown SD

Printed 11/13/2020 9:07:34 AM

General Fund (10)

2120 Guidance Services	Elementary	Secondary	Federal	Total
100 <u>Personnel Services – Salaries</u>				
100 Personnel Services – Salaries	1,000,503.34	1,581,970.78		2,582,474.12
Total Personnel Services – Salaries	\$1,000,503.34	\$1,581,970.78		\$2,582,474.12
200 <u>Personnel Services – Employee Benefits</u>				
210 Group Insurance – Contracted Provider	162,778.01	243,108.89		405,886.90
220 Social Security Contributions	74,634.15	117,382.16		192,016.31
230 PSERS Retirement Contributions	339,392.31	526,635.03		866,027.34
Total Personnel Services – Employee Benefits	\$576,804.47	\$887,126.08		\$1,463,930.55
300 <u>Purchased Professional and Technical Services</u>				
329 Professional Educational Services – Other	41,633.21	41,633.21		83,266.42
Total Purchased Professional and Technical Services	\$41,633.21	\$41,633.21		\$83,266.42
400 <u>Purchased Property Services</u>				
430 Repairs and Maintenance Services		3,723.79		3,723.79
Total Purchased Property Services		\$3,723.79		\$3,723.79
600 <u>Supplies</u>				
610 General Supplies	666.47	8,464.78		9,131.25
640 Books and Periodicals	523.25	8,299.20		8,822.45
Total Supplies	\$1,189.72	\$16,763.98		\$17,953.70
700 <u>Property</u>				
758 Capitalized Technology Software - Original	4,092.21	4,092.21		8,184.42
Total Property	\$4,092.21	\$4,092.21		\$8,184.42
800 <u>Other Objects</u>				
810 Dues and Fees		845.00		845.00
Total Other Objects		\$845.00		\$845.00
Total 2120 Guidance Services	\$1,624,222.95	\$2,536,155.05		\$4,160,378.00

LEA : 124157802 Tredyffrin-Easttown SD

Printed 11/13/2020 9:07:34 AM

General Fund (10)

2150 Speech Pathology and Audiology Services

	<u>Elementary</u>	<u>Secondary</u>	<u>Federal</u>	<u>Total</u>
500 <u>Other Purchased Services</u>				
580 Travel	128.44	128.44		256.88
Total Other Purchased Services	\$128.44	\$128.44		\$256.88
600 <u>Supplies</u>				
610 General Supplies	2,412.02	2,412.02		4,824.04
Total Supplies	\$2,412.02	\$2,412.02		\$4,824.04
Total 2150 Speech Pathology and Audiology Services	\$2,540.46	\$2,540.46		\$5,080.92

LEA : 124157802 Tredyffrin-Easttown SD

Printed 11/13/2020 9:07:34 AM

General Fund (10)

2170 Student Accounting Services	<u>Elementary</u>	<u>Secondary</u>	<u>Federal</u>	<u>Total</u>
100 <u>Personnel Services – Salaries</u>				
100 Personnel Services – Salaries				35,680.28
Total Personnel Services – Salaries				\$35,680.28
200 <u>Personnel Services – Employee Benefits</u>				
210 Group Insurance – Contracted Provider				9,289.44
220 Social Security Contributions				2,692.67
230 PSERS Retirement Contributions				12,114.53
Total Personnel Services – Employee Benefits				\$24,096.64
Total 2170 Student Accounting Services				\$59,776.92

LEA : 124157802 Tredyffrin-Easttown SD

Printed 11/13/2020 9:07:34 AM

General Fund (10)

2200 Support Services – Instructional Staff	Elementary	Secondary	Federal	Total
100 <u>Personnel Services – Salaries</u>				
100 Personnel Services – Salaries	1,226,140.72	1,035,773.33		2,261,914.05
Total Personnel Services – Salaries	\$1,226,140.72	\$1,035,773.33		\$2,261,914.05
200 <u>Personnel Services – Employee Benefits</u>				
210 Group Insurance – Contracted Provider	175,035.47	107,093.95		282,129.42
220 Social Security Contributions	84,302.73	70,629.38		154,932.11
230 PSERS Retirement Contributions	403,744.74	338,847.82		742,592.56
240 Tuition Reimbursement	132,170.57	132,170.57		264,341.14
250 Unemployment Compensation	66.54	66.55		133.09
260 Workers' Compensation	6,525.84	6,525.85		13,051.69
Total Personnel Services – Employee Benefits	\$801,845.89	\$655,334.12		\$1,457,180.01
300 <u>Purchased Professional and Technical Services</u>				
322 Professional Educational Services – Ius			13,774.30	13,774.30
329 Professional Educational Services – Other	5,625.00	5,625.00	9,350.00	20,600.00
340 Technical Services	750.00	750.00		1,500.00
Total Purchased Professional and Technical Services	\$6,375.00	\$6,375.00	\$23,124.30	\$35,874.30
400 <u>Purchased Property Services</u>				
430 Repairs and Maintenance Services	1,155.00	1,532.90		2,687.90
Total Purchased Property Services	\$1,155.00	\$1,532.90		\$2,687.90
500 <u>Other Purchased Services</u>				
550 Printing and Binding	3,823.69	3,823.71		7,647.40
580 Travel	3,953.65	3,953.66		7,907.31
Total Other Purchased Services	\$7,777.34	\$7,777.37		\$15,554.71
600 <u>Supplies</u>				
610 General Supplies	16,999.04	22,115.63		39,114.67
640 Books and Periodicals	48,841.24	93,700.05	4,921.22	147,462.51
Total Supplies	\$65,840.28	\$115,815.68	\$4,921.22	\$186,577.18
700 <u>Property</u>				
758 Capitalized Technology Software - Original	14,217.52	8,638.52		22,856.04
768 Capitalized Technology Software - Replacement	5,909.75	2,994.75		8,904.50
Total Property	\$20,127.27	\$11,633.27		\$31,760.54
800 <u>Other Objects</u>				
810 Dues and Fees	7,329.50	7,329.50		14,659.00
Total Other Objects	\$7,329.50	\$7,329.50		\$14,659.00
Total 2200 Support Services – Instructional Staff	\$2,136,591.00	\$1,841,571.17	\$28,045.52	\$4,006,207.69

LEA : 124157802 Tredyffrin-Easttown SD

Printed 11/13/2020 9:07:34 AM

General Fund (10)				
2220 Technology Support Services	<u>Elementary</u>	<u>Secondary</u>	<u>Federal</u>	<u>Total</u>
600 <u>Supplies</u>				
610 General Supplies	386.38			386.38
Total Supplies	\$386.38			\$386.38
700 <u>Property</u>				
758 Capitalized Technology Software - Original	6,059.00			6,059.00
768 Capitalized Technology Software - Replacement	2,915.00			2,915.00
Total Property	\$8,974.00			\$8,974.00
Total 2220 Technology Support Services	\$9,360.38			\$9,360.38

LEA : 124157802 Tredyffrin-Easttown SD

Printed 11/13/2020 9:07:34 AM

General Fund (10)

2230 Educational Television Services	Elementary	Secondary	Federal	Total
100 <u>Personnel Services – Salaries</u>				
100 Personnel Services – Salaries		80,483.02		80,483.02
Total Personnel Services – Salaries		\$80,483.02		\$80,483.02
200 <u>Personnel Services – Employee Benefits</u>				
210 Group Insurance – Contracted Provider		1,600.07		1,600.07
220 Social Security Contributions		6,161.55		6,161.55
230 PSERS Retirement Contributions		27,597.50		27,597.50
Total Personnel Services – Employee Benefits		\$35,359.12		\$35,359.12
400 <u>Purchased Property Services</u>				
430 Repairs and Maintenance Services		737.90		737.90
Total Purchased Property Services		\$737.90		\$737.90
600 <u>Supplies</u>				
610 General Supplies		7,005.20		7,005.20
640 Books and Periodicals		595.88		595.88
Total Supplies		\$7,601.08		\$7,601.08
700 <u>Property</u>				
758 Capitalized Technology Software - Original	8,158.52	8,638.52		16,797.04
Total Property	\$8,158.52	\$8,638.52		\$16,797.04
Total 2230 Educational Television Services	\$8,158.52	\$132,819.64		\$140,978.16

LEA : 124157802 Tredyffrin-Easttown SD

Printed 11/13/2020 9:07:34 AM

General Fund (10)					
2250 School Library Services		Elementary	Secondary	Federal	Total
100 <u>Personnel Services – Salaries</u>					
100	Personnel Services – Salaries	569,349.97	298,499.55		867,849.52
Total Personnel Services – Salaries		\$569,349.97	\$298,499.55		\$867,849.52
200 <u>Personnel Services – Employee Benefits</u>					
210	Group Insurance – Contracted Provider	117,510.25	47,968.64		165,478.89
220	Social Security Contributions	42,081.62	22,246.69		64,328.31
230	PSERS Retirement Contributions	194,164.19	101,669.75		295,833.94
Total Personnel Services – Employee Benefits		\$353,756.06	\$171,885.08		\$525,641.14
400 <u>Purchased Property Services</u>					
430	Repairs and Maintenance Services	1,155.00	795.00		1,950.00
Total Purchased Property Services		\$1,155.00	\$795.00		\$1,950.00
600 <u>Supplies</u>					
610	General Supplies	7,682.16	6,179.90		13,862.06
640	Books and Periodicals	45,850.61	90,113.53		135,964.14
Total Supplies		\$53,532.77	\$96,293.43		\$149,826.20
700 <u>Property</u>					
768	Capitalized Technology Software - Replacement	2,994.75	2,994.75		5,989.50
Total Property		\$2,994.75	\$2,994.75		\$5,989.50
Total 2250 School Library Services		\$980,788.55	\$570,467.81		\$1,551,256.36

LEA : 124157802 Tredyffrin-Easttown SD

Printed 11/13/2020 9:07:34 AM

General Fund (10)				
2260 Instruction and Curriculum Development Services	<u>Elementary</u>	<u>Secondary</u>	<u>Federal</u>	<u>Total</u>
100 <u>Personnel Services – Salaries</u>				
100 Personnel Services – Salaries	517,894.66	517,894.67		1,035,789.33
Total Personnel Services – Salaries	\$517,894.66	\$517,894.67		\$1,035,789.33
200 <u>Personnel Services – Employee Benefits</u>				
210 Group Insurance – Contracted Provider	51,353.86	51,353.88		102,707.74
220 Social Security Contributions	33,802.32	33,802.34		67,604.66
230 PSERS Retirement Contributions	163,484.35	163,484.36		326,968.71
250 Unemployment Compensation	66.54	66.55		133.09
260 Workers' Compensation	6,525.84	6,525.85		13,051.69
Total Personnel Services – Employee Benefits	\$255,232.91	\$255,232.98		\$510,465.89
500 <u>Other Purchased Services</u>				
550 Printing and Binding	2,858.57	2,858.58		5,717.15
580 Travel	1,897.93	1,897.93		3,795.86
Total Other Purchased Services	\$4,756.50	\$4,756.51		\$9,513.01
600 <u>Supplies</u>				
610 General Supplies	1,228.14	1,228.16		2,456.30
640 Books and Periodicals	104.50	104.50		209.00
Total Supplies	\$1,332.64	\$1,332.66		\$2,665.30
800 <u>Other Objects</u>				
810 Dues and Fees	147.50	147.50		295.00
Total Other Objects	\$147.50	\$147.50		\$295.00
Total 2260 Instruction and Curriculum Development Services	\$779,364.21	\$779,364.32		\$1,558,728.53

LEA : 124157802 Tredyffrin-Easttown SD

Printed 11/13/2020 9:07:34 AM

General Fund (10)				
2270 Instructional Staff Professional Development Services	<u>Elementary</u>	<u>Secondary</u>	<u>Federal</u>	<u>Total</u>
100 <u>Personnel Services – Salaries</u>				
100 Personnel Services – Salaries	138,896.09	138,896.09		277,792.18
Total Personnel Services – Salaries	\$138,896.09	\$138,896.09		\$277,792.18
200 <u>Personnel Services – Employee Benefits</u>				
210 Group Insurance – Contracted Provider	6,171.36	6,171.36		12,342.72
220 Social Security Contributions	8,418.79	8,418.80		16,837.59
230 PSERS Retirement Contributions	46,096.20	46,096.21		92,192.41
240 Tuition Reimbursement	132,170.57	132,170.57		264,341.14
Total Personnel Services – Employee Benefits	\$192,856.92	\$192,856.94		\$385,713.86
300 <u>Purchased Professional and Technical Services</u>				
329 Professional Educational Services – Other	5,625.00	5,625.00	9,350.00	20,600.00
Total Purchased Professional and Technical Services	\$5,625.00	\$5,625.00	\$9,350.00	\$20,600.00
500 <u>Other Purchased Services</u>				
550 Printing and Binding	965.12	965.13		1,930.25
580 Travel	2,055.72	2,055.73		4,111.45
Total Other Purchased Services	\$3,020.84	\$3,020.86		\$6,041.70
600 <u>Supplies</u>				
610 General Supplies	2,041.16	2,041.16		4,082.32
640 Books and Periodicals	1,413.93	1,413.94	4,921.22	7,749.09
Total Supplies	\$3,455.09	\$3,455.10	\$4,921.22	\$11,831.41
800 <u>Other Objects</u>				
810 Dues and Fees	7,182.00	7,182.00		14,364.00
Total Other Objects	\$7,182.00	\$7,182.00		\$14,364.00
Total 2270 Instructional Staff Professional Development Services	\$351,035.94	\$351,035.99	\$14,271.22	\$716,343.15

LEA : 124157802 Tredyffrin-Easttown SD

Printed 11/13/2020 9:07:34 AM

General Fund (10)

2280 Nonpublic Support Services

	<u>Elementary</u>	<u>Secondary</u>	<u>Federal</u>	<u>Total</u>
300 <u>Purchased Professional and Technical Services</u>				
322 Professional Educational Services – lus			13,774.30	13,774.30
Total Purchased Professional and Technical Services			\$13,774.30	\$13,774.30
Total 2280 Nonpublic Support Services			\$13,774.30	\$13,774.30

LEA : 124157802 Tredyffrin-Easttown SD

Printed 11/13/2020 9:07:34 AM

General Fund (10)				
2290 Other Instructional Staff Services	<u>Elementary</u>	<u>Secondary</u>	<u>Federal</u>	<u>Total</u>
300 <u>Purchased Professional and Technical Services</u>				
340 Technical Services	750.00	750.00		1,500.00
Total Purchased Professional and Technical Services	\$750.00	\$750.00		\$1,500.00
600 <u>Supplies</u>				
610 General Supplies	5,661.20	5,661.21		11,322.41
640 Books and Periodicals	1,472.20	1,472.20		2,944.40
Total Supplies	\$7,133.40	\$7,133.41		\$14,266.81
Total 2290 Other Instructional Staff Services	\$7,883.40	\$7,883.41		\$15,766.81

LEA : 124157802 Tredyffrin-Easttown SD

Printed 11/13/2020 9:07:34 AM

General Fund (10)

2300 Support Services – Administration	Elementary	Secondary	Federal	Total
100 Personnel Services – Salaries				
100 Personnel Services – Salaries	1,916,031.36	2,134,207.77		4,818,286.29
Total Personnel Services – Salaries	\$1,916,031.36	\$2,134,207.77		\$4,818,286.29
200 Personnel Services – Employee Benefits				
210 Group Insurance – Contracted Provider	305,949.03	469,401.70		865,525.54
220 Social Security Contributions	95,691.69	125,344.73		265,854.72
230 PSERS Retirement Contributions	612,370.63	682,323.64		1,541,050.82
250 Unemployment Compensation	105.43	105.44		210.87
260 Workers' Compensation	14,473.27	14,473.27		28,946.54
Total Personnel Services – Employee Benefits	\$1,028,590.05	\$1,291,648.78		\$2,701,588.49
300 Purchased Professional and Technical Services				
329 Professional Educational Services – Other	5,026.09	5,026.10		10,752.19
330 Other Professional Services				557,627.55
340 Technical Services				103,289.29
350 Security / Safety Services				3,046.25
Total Purchased Professional and Technical Services	\$5,026.09	\$5,026.10		\$674,715.28
400 Purchased Property Services				
430 Repairs and Maintenance Services	5,646.81	9,450.14		15,426.95
440 Rentals	2,500.82	2,500.82		11,258.96
Total Purchased Property Services	\$8,147.63	\$11,950.96		\$26,685.91
500 Other Purchased Services				
520 Insurance – General				331,240.44
530 Communications	5,376.64	5,176.99		71,578.53
541 Advertising Related to Federal Grant Awards				12,121.84
549 Other Advertising/Public Relations				10,640.84
550 Printing and Binding	3,056.22	2,564.24		9,390.93
580 Travel	521.25	24,189.98		27,466.77
Total Other Purchased Services	\$8,954.11	\$31,931.21		\$462,439.35
600 Supplies				
610 General Supplies	3,998.84	4,083.62		15,337.91
630 Food				2,905.20
640 Books and Periodicals	2,504.04	10,737.31		13,582.27
Total Supplies	\$6,502.88	\$14,820.93		\$31,825.38
700 Property				
758 Capitalized Technology Software - Original	8,267.70	8,267.70		16,669.47
768 Capitalized Technology Software - Replacement	10,691.63	13,274.05		24,099.75
Total Property	\$18,959.33	\$21,541.75		\$40,769.22
800 Other Objects				
810 Dues and Fees	664.50	664.50		17,432.42
Total Other Objects	\$664.50	\$664.50		\$17,432.42
Total 2300 Support Services – Administration	\$2,992,875.95	\$3,511,792.00		\$8,773,742.34

LEA : 124157802 Tredyffrin-Easttown SD

Printed 11/13/2020 9:07:34 AM

General Fund (10)

2310 Board Services

Elementary Secondary Federal Total

300 <u>Purchased Professional and Technical Services</u>				
350 Security / Safety Services				3,046.25
Total Purchased Professional and Technical Services				\$3,046.25
500 <u>Other Purchased Services</u>				
520 Insurance – General				199,598.74
541 Advertising Related to Federal Grant Awards				12,121.84
580 Travel				284.00
Total Other Purchased Services				\$212,004.58
600 <u>Supplies</u>				
610 General Supplies				361.26
630 Food				2,905.20
Total Supplies				\$3,266.46
800 <u>Other Objects</u>				
810 Dues and Fees				13,760.42
Total Other Objects				\$13,760.42
Total 2310 Board Services				\$232,077.71

LEA : 124157802 Tredyffrin-Easttown SD

Printed 11/13/2020 9:07:34 AM

General Fund (10)

2320 Board Treasurer Services	<u>Elementary</u>	<u>Secondary</u>	<u>Federal</u>	<u>Total</u>
500 <u>Other Purchased Services</u>				
520 Insurance – General				131,641.70
Total Other Purchased Services				\$131,641.70
Total 2320 Board Treasurer Services				\$131,641.70

LEA : 124157802 Tredyffrin-Easttown SD

Printed 11/13/2020 9:07:34 AM

General Fund (10)

2330 Tax Assessment and Collection Services	<u>Elementary</u>	<u>Secondary</u>	<u>Federal</u>	<u>Total</u>
100 <u>Personnel Services – Salaries</u>				
100 Personnel Services – Salaries				51,224.29
Total Personnel Services – Salaries				\$51,224.29
200 <u>Personnel Services – Employee Benefits</u>				
210 Group Insurance – Contracted Provider				23,210.76
220 Social Security Contributions				3,822.94
230 PSERS Retirement Contributions				17,433.85
Total Personnel Services – Employee Benefits				\$44,467.55
300 <u>Purchased Professional and Technical Services</u>				
340 Technical Services				85,175.04
Total Purchased Professional and Technical Services				\$85,175.04
500 <u>Other Purchased Services</u>				
530 Communications				6,600.00
550 Printing and Binding				2,588.47
Total Other Purchased Services				\$9,188.47
600 <u>Supplies</u>				
610 General Supplies				3,355.16
Total Supplies				\$3,355.16
Total 2330 Tax Assessment and Collection Services				\$193,410.51

LEA : 124157802 Tredyffrin-Easttown SD

Printed 11/13/2020 9:07:34 AM

General Fund (10)				
2340 Staff Relations and Negotiations Services	<u>Elementary</u>	<u>Secondary</u>	<u>Federal</u>	<u>Total</u>
300 <u>Purchased Professional and Technical Services</u>				
329 Professional Educational Services – Other				700.00
330 Other Professional Services				106,898.77
Total Purchased Professional and Technical Services				\$107,598.77
400 <u>Purchased Property Services</u>				
430 Repairs and Maintenance Services				330.00
Total Purchased Property Services				\$330.00
500 <u>Other Purchased Services</u>				
549 Other Advertising/Public Relations				10,640.84
550 Printing and Binding				1,182.00
580 Travel				247.60
Total Other Purchased Services				\$12,070.44
600 <u>Supplies</u>				
610 General Supplies				2,965.53
Total Supplies				\$2,965.53
800 <u>Other Objects</u>				
810 Dues and Fees				1,963.00
Total Other Objects				\$1,963.00
Total 2340 Staff Relations and Negotiations Services				\$124,927.74

2350 Legal and Accounting Services

Elementary

Secondary

FederalTotal

330 Other Professional Services

445,432.98

340 Technical Services

18,114.25

Total Purchased Professional and Technical Services

\$463,547.23

Total 2350 Legal and Accounting Services

\$463,547.23

LEA : 124157802 Tredyffrin-Easttown SD

Printed 11/13/2020 9:07:34 AM

General Fund (10)

2360 Office of the Superintendent / Executive Director Services	<u>Elementary</u>	<u>Secondary</u>	<u>Federal</u>	<u>Total</u>
100 <u>Personnel Services – Salaries</u>				
100 Personnel Services – Salaries				581,881.80
Total Personnel Services – Salaries				\$581,881.80
200 <u>Personnel Services – Employee Benefits</u>				
210 Group Insurance – Contracted Provider				44,502.45
220 Social Security Contributions				31,029.78
230 PSERS Retirement Contributions				183,112.09
Total Personnel Services – Employee Benefits				\$258,644.32
400 <u>Purchased Property Services</u>				
440 Rentals				6,257.32
Total Purchased Property Services				\$6,257.32
500 <u>Other Purchased Services</u>				
530 Communications	25.00	25.00		50.00
580 Travel				2,223.94
Total Other Purchased Services	\$25.00	\$25.00		\$2,273.94
600 <u>Supplies</u>				
610 General Supplies				416.76
640 Books and Periodicals				260.96
Total Supplies				\$677.72
Total 2360 Office of the Superintendent / Executive Director Services	\$25.00	\$25.00		\$849,735.10

LEA : 124157802 Tredyffrin-Easttown SD

Printed 11/13/2020 9:07:34 AM

General Fund (10)				
2370 Community Relations Services	<u>Elementary</u>	<u>Secondary</u>	<u>Federal</u>	<u>Total</u>
100 <u>Personnel Services – Salaries</u>				
100 Personnel Services – Salaries				134,941.07
Total Personnel Services – Salaries				\$134,941.07
200 <u>Personnel Services – Employee Benefits</u>				
210 Group Insurance – Contracted Provider				22,461.60
220 Social Security Contributions				9,965.58
230 PSERS Retirement Contributions				45,810.61
Total Personnel Services – Employee Benefits				\$78,237.79
300 <u>Purchased Professional and Technical Services</u>				
330 Other Professional Services				5,295.80
Total Purchased Professional and Technical Services				\$5,295.80
500 <u>Other Purchased Services</u>				
530 Communications				54,424.90
Total Other Purchased Services				\$54,424.90
600 <u>Supplies</u>				
640 Books and Periodicals				79.96
Total Supplies				\$79.96
700 <u>Property</u>				
758 Capitalized Technology Software - Original				134.07
768 Capitalized Technology Software - Replacement				134.07
Total Property				\$268.14
800 <u>Other Objects</u>				
810 Dues and Fees				380.00
Total Other Objects				\$380.00
Total 2370 Community Relations Services				\$273,627.66

LEA : 124157802 Tredyffrin-Easttown SD

Printed 11/13/2020 9:07:34 AM

General Fund (10)

2380 Office of the Principal Services	Elementary	Secondary	Federal	Total
100 <u>Personnel Services – Salaries</u>				
100 Personnel Services – Salaries	1,916,031.36	2,134,207.77		4,050,239.13
Total Personnel Services – Salaries	\$1,916,031.36	\$2,134,207.77		\$4,050,239.13
200 <u>Personnel Services – Employee Benefits</u>				
210 Group Insurance – Contracted Provider	305,949.03	469,401.70		775,350.73
220 Social Security Contributions	95,691.69	125,344.73		221,036.42
230 PSERS Retirement Contributions	612,370.63	682,323.64		1,294,694.27
250 Unemployment Compensation	105.43	105.44		210.87
260 Workers' Compensation	14,473.27	14,473.27		28,946.54
Total Personnel Services – Employee Benefits	\$1,028,590.05	\$1,291,648.78		\$2,320,238.83
300 <u>Purchased Professional and Technical Services</u>				
329 Professional Educational Services – Other	5,026.09	5,026.10		10,052.19
Total Purchased Professional and Technical Services	\$5,026.09	\$5,026.10		\$10,052.19
400 <u>Purchased Property Services</u>				
430 Repairs and Maintenance Services	5,646.81	9,450.14		15,096.95
440 Rentals	2,500.82	2,500.82		5,001.64
Total Purchased Property Services	\$8,147.63	\$11,950.96		\$20,098.59
500 <u>Other Purchased Services</u>				
530 Communications	5,351.64	5,151.99		10,503.63
550 Printing and Binding	3,056.22	2,564.24		5,620.46
580 Travel	521.25	24,189.98		24,711.23
Total Other Purchased Services	\$8,929.11	\$31,906.21		\$40,835.32
600 <u>Supplies</u>				
610 General Supplies	3,998.84	4,083.62		8,082.46
640 Books and Periodicals	2,504.04	10,737.31		13,241.35
Total Supplies	\$6,502.88	\$14,820.93		\$21,323.81
700 <u>Property</u>				
758 Capitalized Technology Software - Original	8,267.70	8,267.70		16,535.40
768 Capitalized Technology Software - Replacement	10,691.63	13,274.05		23,965.68
Total Property	\$18,959.33	\$21,541.75		\$40,501.08
800 <u>Other Objects</u>				
810 Dues and Fees	664.50	664.50		1,329.00
Total Other Objects	\$664.50	\$664.50		\$1,329.00
Total 2380 Office of the Principal Services	\$2,992,850.95	\$3,511,767.00		\$6,504,617.95

LEA : 124157802 Tredyffrin-Easttown SD

Printed 11/13/2020 9:07:34 AM

General Fund (10)

2390 Other Administration Services	<u>Elementary</u>	<u>Secondary</u>	<u>Federal</u>	<u>Total</u>
600 <u>Supplies</u>				
610 General Supplies				156.74
Total Supplies				\$156.74
Total 2390 Other Administration Services				\$156.74

LEA : 124157802 Tredyffrin-Easttown SD

Printed 11/13/2020 9:07:34 AM

General Fund (10)				
2400 Support Services – Pupil Health	<u>Elementary</u>	<u>Secondary</u>	<u>Federal</u>	<u>Total</u>
100 <u>Personnel Services – Salaries</u>				
100 Personnel Services – Salaries				647,721.91
Total Personnel Services – Salaries				\$647,721.91
200 <u>Personnel Services – Employee Benefits</u>				
210 Group Insurance – Contracted Provider				124,781.06
220 Social Security Contributions				48,243.17
230 PSERS Retirement Contributions				217,423.00
250 Unemployment Compensation				35.93
260 Workers' Compensation				3,380.61
Total Personnel Services – Employee Benefits				\$393,863.77
300 <u>Purchased Professional and Technical Services</u>				
329 Professional Educational Services – Other				263,326.67
Total Purchased Professional and Technical Services				\$263,326.67
400 <u>Purchased Property Services</u>				
430 Repairs and Maintenance Services				1,325.77
Total Purchased Property Services				\$1,325.77
500 <u>Other Purchased Services</u>				
580 Travel				133.70
Total Other Purchased Services				\$133.70
600 <u>Supplies</u>				
610 General Supplies			16,439.76	81,939.59
640 Books and Periodicals				10,920.00
Total Supplies			\$16,439.76	\$92,859.59
700 <u>Property</u>				
768 Capitalized Technology Software - Replacement				15,236.39
Total Property				\$15,236.39
Total 2400 Support Services – Pupil Health			\$16,439.76	\$1,414,467.80

LEA : 124157802 Tredyffrin-Easttown SD

Printed 11/13/2020 9:07:34 AM

General Fund (10)

2410 Supervision of Health Services

Elementary Secondary Federal Total

100 <u>Personnel Services – Salaries</u>				
100 Personnel Services – Salaries				647,721.91
Total Personnel Services – Salaries				\$647,721.91
200 <u>Personnel Services – Employee Benefits</u>				
210 Group Insurance – Contracted Provider				124,781.06
220 Social Security Contributions				48,243.17
230 PSERS Retirement Contributions				217,423.00
250 Unemployment Compensation				35.93
260 Workers' Compensation				3,380.61
Total Personnel Services – Employee Benefits				\$393,863.77
300 <u>Purchased Professional and Technical Services</u>				
329 Professional Educational Services – Other				53,494.42
Total Purchased Professional and Technical Services				\$53,494.42
Total 2410 Supervision of Health Services				\$1,095,080.10

LEA : 124157802 Tredyffrin-Easttown SD

Printed 11/13/2020 9:07:34 AM

General Fund (10)

2411 Supervision of Health Services – Head of Component	<u>Elementary</u>	<u>Secondary</u>	<u>Federal</u>	<u>Total</u>
100 <u>Personnel Services – Salaries</u>				
100 Personnel Services – Salaries				647,721.91
Total Personnel Services – Salaries				\$647,721.91
200 <u>Personnel Services – Employee Benefits</u>				
210 Group Insurance – Contracted Provider				124,781.06
220 Social Security Contributions				48,243.17
230 PSERS Retirement Contributions				217,423.00
250 Unemployment Compensation				35.93
260 Workers' Compensation				3,380.61
Total Personnel Services – Employee Benefits				\$393,863.77
300 <u>Purchased Professional and Technical Services</u>				
329 Professional Educational Services – Other				53,494.42
Total Purchased Professional and Technical Services				\$53,494.42
Total 2411 Supervision of Health Services – Head of Component				\$1,095,080.10

LEA : 124157802 Tredyffrin-Easttown SD

Printed 11/13/2020 9:07:34 AM

General Fund (10)

2420 Medical Services

<u>Elementary</u>	<u>Secondary</u>	<u>Federal</u>	<u>Total</u>
-------------------	------------------	----------------	--------------

300 Purchased Professional and Technical Services

329 Professional Educational Services – Other			10,723.50
---	--	--	-----------

Total Purchased Professional and Technical Services			\$10,723.50
--	--	--	--------------------

Total 2420 Medical Services			\$10,723.50
------------------------------------	--	--	--------------------

LEA : 124157802 Tredyffrin-Easttown SD

Printed 11/13/2020 9:07:34 AM

General Fund (10)

2430 Dental Services

	<u>Elementary</u>	<u>Secondary</u>	<u>Federal</u>	<u>Total</u>
300 <u>Purchased Professional and Technical Services</u>				
329 Professional Educational Services – Other				216.00
Total Purchased Professional and Technical Services				\$216.00
Total 2430 Dental Services				\$216.00

LEA : 124157802 Tredyffrin-Easttown SD

Printed 11/13/2020 9:07:34 AM

General Fund (10)				
2440 Nursing Services				
	<u>Elementary</u>	<u>Secondary</u>	<u>Federal</u>	<u>Total</u>
300 <u>Purchased Professional and Technical Services</u>				
329 Professional Educational Services – Other				198,892.75
Total Purchased Professional and Technical Services				\$198,892.75
400 <u>Purchased Property Services</u>				
430 Repairs and Maintenance Services				1,325.77
Total Purchased Property Services				\$1,325.77
500 <u>Other Purchased Services</u>				
580 Travel				133.70
Total Other Purchased Services				\$133.70
600 <u>Supplies</u>				
610 General Supplies			16,439.76	81,939.59
640 Books and Periodicals				10,920.00
Total Supplies			\$16,439.76	\$92,859.59
700 <u>Property</u>				
768 Capitalized Technology Software - Replacement				15,236.39
Total Property				\$15,236.39
Total 2440 Nursing Services			\$16,439.76	\$308,448.20

LEA : 124157802 Tredyffrin-Easttown SD

Printed 11/13/2020 9:07:34 AM

General Fund (10)

2500 Support Services – Business	Elementary	Secondary	Federal	Total
100 <u>Personnel Services – Salaries</u>				
100 Personnel Services – Salaries				714,361.63
Total Personnel Services – Salaries				\$714,361.63
200 <u>Personnel Services – Employee Benefits</u>				
210 Group Insurance – Contracted Provider				226,775.92
220 Social Security Contributions				53,282.62
230 PSERS Retirement Contributions				233,338.09
250 Unemployment Compensation				43.43
260 Workers' Compensation				4,407.24
Total Personnel Services – Employee Benefits				\$517,847.30
300 <u>Purchased Professional and Technical Services</u>				
329 Professional Educational Services – Other				3,150.00
330 Other Professional Services				26,100.00
Total Purchased Professional and Technical Services				\$29,250.00
400 <u>Purchased Property Services</u>				
430 Repairs and Maintenance Services				432.00
Total Purchased Property Services				\$432.00
500 <u>Other Purchased Services</u>				
550 Printing and Binding				304.60
580 Travel				2,827.01
Total Other Purchased Services				\$3,131.61
600 <u>Supplies</u>				
610 General Supplies				3,206.44
640 Books and Periodicals				43,329.27
Total Supplies				\$46,535.71
700 <u>Property</u>				
768 Capitalized Technology Software - Replacement				1,092.68
Total Property				\$1,092.68
800 <u>Other Objects</u>				
810 Dues and Fees				25,682.50
Total Other Objects				\$25,682.50
Total 2500 Support Services – Business				\$1,338,333.43

LEA : 124157802 Tredyffrin-Easttown SD

Printed 11/13/2020 9:07:34 AM

General Fund (10)				
2510 Fiscal Services	<u>Elementary</u>	<u>Secondary</u>	<u>Federal</u>	<u>Total</u>
100 <u>Personnel Services – Salaries</u>				
100 Personnel Services – Salaries				583,319.40
Total Personnel Services – Salaries				\$583,319.40
200 <u>Personnel Services – Employee Benefits</u>				
210 Group Insurance – Contracted Provider				195,918.09
220 Social Security Contributions				43,479.80
230 PSERS Retirement Contributions				192,481.63
250 Unemployment Compensation				43.43
260 Workers' Compensation				4,407.24
Total Personnel Services – Employee Benefits				\$436,330.19
300 <u>Purchased Professional and Technical Services</u>				
329 Professional Educational Services – Other				3,150.00
330 Other Professional Services				26,100.00
Total Purchased Professional and Technical Services				\$29,250.00
500 <u>Other Purchased Services</u>				
550 Printing and Binding				304.60
580 Travel				2,827.01
Total Other Purchased Services				\$3,131.61
600 <u>Supplies</u>				
610 General Supplies				2,855.46
640 Books and Periodicals				43,329.27
Total Supplies				\$46,184.73
700 <u>Property</u>				
768 Capitalized Technology Software - Replacement				1,092.68
Total Property				\$1,092.68
800 <u>Other Objects</u>				
810 Dues and Fees				25,432.50
Total Other Objects				\$25,432.50
Total 2510 Fiscal Services				\$1,124,741.11

LEA : 124157802 Tredyffrin-Easttown SD

Printed 11/13/2020 9:07:34 AM

General Fund (10)

2511 Supervision of Fiscal Services - Head of Component	<u>Elementary</u>	<u>Secondary</u>	<u>Federal</u>	<u>Total</u>
100 <u>Personnel Services – Salaries</u>				
100 Personnel Services – Salaries				583,319.40
Total Personnel Services – Salaries				\$583,319.40
200 <u>Personnel Services – Employee Benefits</u>				
210 Group Insurance – Contracted Provider				195,918.09
220 Social Security Contributions				43,479.80
230 PSERS Retirement Contributions				192,481.63
250 Unemployment Compensation				43.43
260 Workers' Compensation				4,407.24
Total Personnel Services – Employee Benefits				\$436,330.19
300 <u>Purchased Professional and Technical Services</u>				
329 Professional Educational Services – Other				3,150.00
330 Other Professional Services				26,100.00
Total Purchased Professional and Technical Services				\$29,250.00
500 <u>Other Purchased Services</u>				
550 Printing and Binding				304.60
580 Travel				2,827.01
Total Other Purchased Services				\$3,131.61
600 <u>Supplies</u>				
610 General Supplies				2,855.46
640 Books and Periodicals				43,329.27
Total Supplies				\$46,184.73
700 <u>Property</u>				
768 Capitalized Technology Software - Replacement				1,092.68
Total Property				\$1,092.68
800 <u>Other Objects</u>				
810 Dues and Fees				25,432.50
Total Other Objects				\$25,432.50
Total 2511 Supervision of Fiscal Services - Head of Component				\$1,124,741.11

LEA : 124157802 Tredyffrin-Easttown SD

Printed 11/13/2020 9:07:34 AM

General Fund (10)				
2520 Purchasing Services				
	<u>Elementary</u>	<u>Secondary</u>	<u>Federal</u>	<u>Total</u>
100 <u>Personnel Services – Salaries</u>				
100 Personnel Services – Salaries				131,042.23
Total Personnel Services – Salaries				\$131,042.23
200 <u>Personnel Services – Employee Benefits</u>				
210 Group Insurance – Contracted Provider				30,857.83
220 Social Security Contributions				9,802.82
230 PSERS Retirement Contributions				40,856.46
Total Personnel Services – Employee Benefits				\$81,517.11
400 <u>Purchased Property Services</u>				
430 Repairs and Maintenance Services				432.00
Total Purchased Property Services				\$432.00
600 <u>Supplies</u>				
610 General Supplies				350.98
Total Supplies				\$350.98
800 <u>Other Objects</u>				
810 Dues and Fees				250.00
Total Other Objects				\$250.00
Total 2520 Purchasing Services				\$213,592.32

LEA : 124157802 Tredyffrin-Easttown SD

Printed 11/13/2020 9:07:34 AM

General Fund (10)				
2600 Operation and Maintenance of Plant Services	<u>Elementary</u>	<u>Secondary</u>	<u>Federal</u>	<u>Total</u>
100 <u>Personnel Services – Salaries</u>				
100 Personnel Services – Salaries			14,691.20	4,495,711.28
Total Personnel Services – Salaries			\$14,691.20	\$4,495,711.28
200 <u>Personnel Services – Employee Benefits</u>				
210 Group Insurance – Contracted Provider				1,056,827.25
220 Social Security Contributions			1,123.87	336,825.72
230 PSERS Retirement Contributions			5,037.61	1,471,711.06
250 Unemployment Compensation				243.99
260 Workers' Compensation				25,179.45
299 All Other Employee Benefits				21,564.47
Total Personnel Services – Employee Benefits			\$6,161.48	\$2,912,351.94
300 <u>Purchased Professional and Technical Services</u>				
390 Other Purchased Professional and Technical Services				179,582.10
Total Purchased Professional and Technical Services				\$179,582.10
400 <u>Purchased Property Services</u>				
410 Cleaning Services				93,282.29
420 Utility Services				939,075.47
430 Repairs and Maintenance Services				1,321,979.70
440 Rentals				74,890.65
Total Purchased Property Services				\$2,429,228.11
500 <u>Other Purchased Services</u>				
522 Automotive Liability Insurance				35,340.00
523 General Property and Liability Insurance				93,992.56
530 Communications				178,972.96
580 Travel				2,841.11
Total Other Purchased Services				\$311,146.63
600 <u>Supplies</u>				
610 General Supplies	321,588.70	305,819.23	1,959.00	629,366.93
620 Energy				385,588.28
Total Supplies	\$321,588.70	\$305,819.23	\$1,959.00	\$1,014,955.21
700 <u>Property</u>				
758 Capitalized Technology Software - Original				22,325.31
768 Capitalized Technology Software - Replacement				19,754.26
Total Property				\$42,079.57
800 <u>Other Objects</u>				
810 Dues and Fees				8,300.22
Total Other Objects				\$8,300.22
Total 2600 Operation and Maintenance of Plant Services	\$321,588.70	\$305,819.23	\$22,811.68	\$11,393,355.06

LEA : 124157802 Tredyffrin-Easttown SD

Printed 11/13/2020 9:07:34 AM

General Fund (10)

2610 Supervision of Operation and Maintenance of Plant Services	Elementary	Secondary	Federal	Total
100 <u>Personnel Services – Salaries</u>				
100 Personnel Services – Salaries			14,691.20	4,369,885.47
Total Personnel Services – Salaries			\$14,691.20	\$4,369,885.47
200 <u>Personnel Services – Employee Benefits</u>				
210 Group Insurance – Contracted Provider				1,033,881.93
220 Social Security Contributions			1,123.87	327,447.46
230 PSERS Retirement Contributions			5,037.61	1,430,876.11
250 Unemployment Compensation				243.99
260 Workers' Compensation				25,179.45
299 All Other Employee Benefits				21,564.47
Total Personnel Services – Employee Benefits			\$6,161.48	\$2,839,193.41
300 <u>Purchased Professional and Technical Services</u>				
390 Other Purchased Professional and Technical Services				179,582.10
Total Purchased Professional and Technical Services				\$179,582.10
400 <u>Purchased Property Services</u>				
410 Cleaning Services				93,282.29
420 Utility Services				939,075.47
430 Repairs and Maintenance Services				1,321,979.70
440 Rentals				29,890.65
Total Purchased Property Services				\$2,384,228.11
500 <u>Other Purchased Services</u>				
522 Automotive Liability Insurance				35,340.00
523 General Property and Liability Insurance				93,992.56
530 Communications				178,972.96
580 Travel				2,841.11
Total Other Purchased Services				\$311,146.63
600 <u>Supplies</u>				
610 General Supplies	321,588.70	305,819.23	1,959.00	629,366.93
620 Energy				385,588.28
Total Supplies	\$321,588.70	\$305,819.23	\$1,959.00	\$1,014,955.21
700 <u>Property</u>				
758 Capitalized Technology Software - Original				22,325.31
768 Capitalized Technology Software - Replacement				19,754.26
Total Property				\$42,079.57
800 <u>Other Objects</u>				
810 Dues and Fees				8,300.22
Total Other Objects				\$8,300.22
Total 2610 Supervision of Operation and Maintenance of Plant Services	\$321,588.70	\$305,819.23	\$22,811.68	\$11,149,370.72

LEA : 124157802 Tredyffrin-Easttown SD

Printed 11/13/2020 9:07:34 AM

General Fund (10)

2611 Supervision of Operation and Maintenance of Plant Services – Head of Component	Elementary	Secondary	Federal	Total
100 <u>Personnel Services – Salaries</u>				
100 Personnel Services – Salaries			14,691.20	4,369,885.47
Total Personnel Services – Salaries			\$14,691.20	\$4,369,885.47
200 <u>Personnel Services – Employee Benefits</u>				
210 Group Insurance – Contracted Provider				1,033,881.93
220 Social Security Contributions			1,123.87	327,447.46
230 PSERS Retirement Contributions			5,037.61	1,430,876.11
250 Unemployment Compensation				243.99
260 Workers' Compensation				25,179.45
299 All Other Employee Benefits				21,564.47
Total Personnel Services – Employee Benefits			\$6,161.48	\$2,839,193.41
300 <u>Purchased Professional and Technical Services</u>				
390 Other Purchased Professional and Technical Services				179,582.10
Total Purchased Professional and Technical Services				\$179,582.10
400 <u>Purchased Property Services</u>				
410 Cleaning Services				93,282.29
420 Utility Services				939,075.47
430 Repairs and Maintenance Services				1,321,979.70
440 Rentals				29,890.65
Total Purchased Property Services				\$2,384,228.11
500 <u>Other Purchased Services</u>				
522 Automotive Liability Insurance				35,340.00
523 General Property and Liability Insurance				93,992.56
530 Communications				178,972.96
580 Travel				2,841.11
Total Other Purchased Services				\$311,146.63
600 <u>Supplies</u>				
610 General Supplies	321,588.70	305,819.23	1,959.00	629,366.93
620 Energy				385,588.28
Total Supplies	\$321,588.70	\$305,819.23	\$1,959.00	\$1,014,955.21
700 <u>Property</u>				
758 Capitalized Technology Software - Original				22,325.31
768 Capitalized Technology Software - Replacement				19,754.26
Total Property				\$42,079.57
800 <u>Other Objects</u>				
810 Dues and Fees				8,300.22
Total Other Objects				\$8,300.22
Total 2611 Supervision of Operation and Maintenance of Plant Services – Head of Component	\$321,588.70	\$305,819.23	\$22,811.68	\$11,149,370.72

LEA : 124157802 Tredyffrin-Easttown SD

Printed 11/13/2020 9:07:34 AM

General Fund (10)

2660 Safety and Security Services	<u>Elementary</u>	<u>Secondary</u>	<u>Federal</u>	<u>Total</u>
100 <u>Personnel Services – Salaries</u>				
100 Personnel Services – Salaries				125,825.81
Total Personnel Services – Salaries				\$125,825.81
200 <u>Personnel Services – Employee Benefits</u>				
210 Group Insurance – Contracted Provider				22,945.32
220 Social Security Contributions				9,378.26
230 PSERS Retirement Contributions				40,834.95
Total Personnel Services – Employee Benefits				\$73,158.53
400 <u>Purchased Property Services</u>				
440 Rentals				45,000.00
Total Purchased Property Services				\$45,000.00
Total 2660 Safety and Security Services				\$243,984.34

LEA : 124157802 Tredyffrin-Easttown SD

Printed 11/13/2020 9:07:34 AM

General Fund (10)				
2700 Student Transportation Services	<u>Elementary</u>	<u>Secondary</u>	<u>Federal</u>	<u>Total</u>
100 <u>Personnel Services – Salaries</u>				
100 Personnel Services – Salaries				244,452.45
Total Personnel Services – Salaries				\$244,452.45
200 <u>Personnel Services – Employee Benefits</u>				
210 Group Insurance – Contracted Provider				46,746.38
220 Social Security Contributions				18,496.25
230 PSERS Retirement Contributions				81,981.86
250 Unemployment Compensation				45.62
260 Workers' Compensation				1,671.52
Total Personnel Services – Employee Benefits				\$148,941.63
400 <u>Purchased Property Services</u>				
440 Rentals				9,780.05
Total Purchased Property Services				\$9,780.05
500 <u>Other Purchased Services</u>				
513 Contracted Carriers				6,390,139.31
516 Student Transportation Services From the IU				7,237.19
Total Other Purchased Services				\$6,397,376.50
600 <u>Supplies</u>				
610 General Supplies				6,830.47
620 Energy				306,979.83
Total Supplies				\$313,810.30
700 <u>Property</u>				
758 Capitalized Technology Software - Original				530.00
Total Property				\$530.00
800 <u>Other Objects</u>				
810 Dues and Fees				469.29
Total Other Objects				\$469.29
Total 2700 Student Transportation Services				\$7,115,360.22

LEA : 124157802 Tredyffrin-Easttown SD

Printed 11/13/2020 9:07:34 AM

General Fund (10)				
2710 Supervision of Student Transportation Services	<u>Elementary</u>	<u>Secondary</u>	<u>Federal</u>	<u>Total</u>
100 <u>Personnel Services – Salaries</u>				
100 Personnel Services – Salaries				244,452.45
Total Personnel Services – Salaries				\$244,452.45
200 <u>Personnel Services – Employee Benefits</u>				
210 Group Insurance – Contracted Provider				46,746.38
220 Social Security Contributions				18,496.25
230 PSERS Retirement Contributions				81,981.86
250 Unemployment Compensation				45.62
260 Workers' Compensation				1,671.52
Total Personnel Services – Employee Benefits				\$148,941.63
400 <u>Purchased Property Services</u>				
440 Rentals				9,780.05
Total Purchased Property Services				\$9,780.05
500 <u>Other Purchased Services</u>				
513 Contracted Carriers				4,738,767.21
516 Student Transportation Services From the IU				7,237.19
Total Other Purchased Services				\$4,746,004.40
600 <u>Supplies</u>				
610 General Supplies				6,830.47
620 Energy				306,979.83
Total Supplies				\$313,810.30
700 <u>Property</u>				
758 Capitalized Technology Software - Original				530.00
Total Property				\$530.00
800 <u>Other Objects</u>				
810 Dues and Fees				469.29
Total Other Objects				\$469.29
Total 2710 Supervision of Student Transportation Services				\$5,463,988.12

LEA : 124157802 Tredyffrin-Easttown SD

Printed 11/13/2020 9:07:34 AM

General Fund (10)				
2711 Supervision of Student Transportation Services – Head of Component	<u>Elementary</u>	<u>Secondary</u>	<u>Federal</u>	<u>Total</u>
100 <u>Personnel Services – Salaries</u>				
100 Personnel Services – Salaries				244,452.45
Total Personnel Services – Salaries				\$244,452.45
200 <u>Personnel Services – Employee Benefits</u>				
210 Group Insurance – Contracted Provider				46,746.38
220 Social Security Contributions				18,496.25
230 PSERS Retirement Contributions				81,981.86
250 Unemployment Compensation				45.62
260 Workers' Compensation				1,671.52
Total Personnel Services – Employee Benefits				\$148,941.63
400 <u>Purchased Property Services</u>				
440 Rentals				9,780.05
Total Purchased Property Services				\$9,780.05
500 <u>Other Purchased Services</u>				
513 Contracted Carriers				4,738,767.21
516 Student Transportation Services From the IU				7,237.19
Total Other Purchased Services				\$4,746,004.40
600 <u>Supplies</u>				
610 General Supplies				6,830.47
620 Energy				306,979.83
Total Supplies				\$313,810.30
700 <u>Property</u>				
758 Capitalized Technology Software - Original				530.00
Total Property				\$530.00
800 <u>Other Objects</u>				
810 Dues and Fees				469.29
Total Other Objects				\$469.29
Total 2711 Supervision of Student Transportation Services – Head of Component				\$5,463,988.12

LEA : 124157802 Tredyffrin-Easttown SD

Printed 11/13/2020 9:07:34 AM

General Fund (10)

2750 Nonpublic Transportation	<u>Elementary</u>	<u>Secondary</u>	<u>Federal</u>	<u>Total</u>
500 <u>Other Purchased Services</u>				
513 Contracted Carriers				1,651,372.10
Total Other Purchased Services				\$1,651,372.10
Total 2750 Nonpublic Transportation				\$1,651,372.10

LEA : 124157802 Tredyffrin-Easttown SD

Printed 11/13/2020 9:07:34 AM

General Fund (10)

2800 Support Services – Central

	<u>Elementary</u>	<u>Secondary</u>	<u>Federal</u>	<u>Total</u>
100 <u>Personnel Services – Salaries</u>				
100 Personnel Services – Salaries				1,415,753.20
Total Personnel Services – Salaries				\$1,415,753.20
200 <u>Personnel Services – Employee Benefits</u>				
210 Group Insurance – Contracted Provider				261,073.49
220 Social Security Contributions				101,346.66
230 PSERS Retirement Contributions				461,117.12
250 Unemployment Compensation				45.93
260 Workers' Compensation				8,446.03
Total Personnel Services – Employee Benefits				\$832,029.23
300 <u>Purchased Professional and Technical Services</u>				
329 Professional Educational Services – Other				87,172.81
330 Other Professional Services				1,100.00
340 Technical Services				313,597.74
Total Purchased Professional and Technical Services				\$401,870.55
400 <u>Purchased Property Services</u>				
430 Repairs and Maintenance Services				136,213.65
440 Rentals				135,295.85
Total Purchased Property Services				\$271,509.50
500 <u>Other Purchased Services</u>				
530 Communications				25,000.00
580 Travel				2,356.79
Total Other Purchased Services				\$27,356.79
600 <u>Supplies</u>				
610 General Supplies				78,956.59
640 Books and Periodicals				461,133.92
Total Supplies				\$540,090.51
700 <u>Property</u>				
758 Capitalized Technology Software - Original				2,215.00
768 Capitalized Technology Software - Replacement				63,546.17
Total Property				\$65,761.17
800 <u>Other Objects</u>				
810 Dues and Fees				250.00
Total Other Objects				\$250.00
Total 2800 Support Services – Central				\$3,554,620.95

LEA : 124157802 Tredyffrin-Easttown SD

Printed 11/13/2020 9:07:34 AM

General Fund (10)

2810 Planning, Research, Development and Evaluation Services	<u>Elementary</u>	<u>Secondary</u>	<u>Federal</u>	<u>Total</u>
300 <u>Purchased Professional and Technical Services</u>				
329 Professional Educational Services – Other				23,839.50
Total Purchased Professional and Technical Services				\$23,839.50
600 <u>Supplies</u>				
610 General Supplies				1,201.89
Total Supplies				\$1,201.89
Total 2810 Planning, Research, Development and Evaluation Services				\$25,041.39

LEA : 124157802 Tredyffrin-Easttown SD

Printed 11/13/2020 9:07:34 AM

General Fund (10)				
2830 Staff Services				
	<u>Elementary</u>	<u>Secondary</u>	<u>Federal</u>	<u>Total</u>
100 <u>Personnel Services – Salaries</u>				
100 Personnel Services – Salaries				435,599.75
Total Personnel Services – Salaries				\$435,599.75
200 <u>Personnel Services – Employee Benefits</u>				
210 Group Insurance – Contracted Provider				40,959.50
220 Social Security Contributions				28,359.55
230 PSERS Retirement Contributions				132,778.91
Total Personnel Services – Employee Benefits				\$202,097.96
300 <u>Purchased Professional and Technical Services</u>				
330 Other Professional Services				1,100.00
Total Purchased Professional and Technical Services				\$1,100.00
600 <u>Supplies</u>				
610 General Supplies				19.47
Total Supplies				\$19.47
Total 2830 Staff Services				\$638,817.18

LEA : 124157802 Tredyffrin-Easttown SD

Printed 11/13/2020 9:07:34 AM

General Fund (10)				
2831 Supervision of Staff Services				
	<u>Elementary</u>	<u>Secondary</u>	<u>Federal</u>	<u>Total</u>
100 <u>Personnel Services – Salaries</u>				
100 Personnel Services – Salaries				435,599.75
Total Personnel Services – Salaries				\$435,599.75
200 <u>Personnel Services – Employee Benefits</u>				
210 Group Insurance – Contracted Provider				40,959.50
220 Social Security Contributions				28,359.55
230 PSERS Retirement Contributions				132,778.91
Total Personnel Services – Employee Benefits				\$202,097.96
300 <u>Purchased Professional and Technical Services</u>				
330 Other Professional Services				1,100.00
Total Purchased Professional and Technical Services				\$1,100.00
600 <u>Supplies</u>				
610 General Supplies				19.47
Total Supplies				\$19.47
Total 2831 Supervision of Staff Services				\$638,817.18

LEA : 124157802 Tredyffrin-Easttown SD

Printed 11/13/2020 9:07:34 AM

General Fund (10)				
2840 Data Processing Services	Elementary	Secondary	Federal	Total
100 Personnel Services – Salaries				
100 Personnel Services – Salaries				958,673.40
Total Personnel Services – Salaries				\$958,673.40
200 Personnel Services – Employee Benefits				
210 Group Insurance – Contracted Provider				216,630.34
220 Social Security Contributions				71,357.27
230 PSERS Retirement Contributions				322,413.23
250 Unemployment Compensation				45.93
260 Workers' Compensation				8,446.03
Total Personnel Services – Employee Benefits				\$618,892.80
300 Purchased Professional and Technical Services				
340 Technical Services				313,597.74
Total Purchased Professional and Technical Services				\$313,597.74
400 Purchased Property Services				
430 Repairs and Maintenance Services				136,213.65
440 Rentals				1,316.83
Total Purchased Property Services				\$137,530.48
500 Other Purchased Services				
580 Travel				2,356.79
Total Other Purchased Services				\$2,356.79
600 Supplies				
610 General Supplies				70,489.46
640 Books and Periodicals				454,147.89
Total Supplies				\$524,637.35
700 Property				
758 Capitalized Technology Software - Original				2,215.00
768 Capitalized Technology Software - Replacement				63,546.17
Total Property				\$65,761.17
800 Other Objects				
810 Dues and Fees				250.00
Total Other Objects				\$250.00
Total 2840 Data Processing Services				\$2,621,699.73

LEA : 124157802 Tredyffrin-Easttown SD

Printed 11/13/2020 9:07:34 AM

General Fund (10)				
2890 Other Support Services Central	<u>Elementary</u>	<u>Secondary</u>	<u>Federal</u>	<u>Total</u>
100 <u>Personnel Services – Salaries</u>				
100 Personnel Services – Salaries				21,480.05
Total Personnel Services – Salaries				\$21,480.05
200 <u>Personnel Services – Employee Benefits</u>				
210 Group Insurance – Contracted Provider				3,483.65
220 Social Security Contributions				1,629.84
230 PSERS Retirement Contributions				5,924.98
Total Personnel Services – Employee Benefits				\$11,038.47
300 <u>Purchased Professional and Technical Services</u>				
329 Professional Educational Services – Other				63,333.31
Total Purchased Professional and Technical Services				\$63,333.31
400 <u>Purchased Property Services</u>				
440 Rentals				133,979.02
Total Purchased Property Services				\$133,979.02
500 <u>Other Purchased Services</u>				
530 Communications				25,000.00
Total Other Purchased Services				\$25,000.00
600 <u>Supplies</u>				
610 General Supplies				7,245.77
640 Books and Periodicals				6,986.03
Total Supplies				\$14,231.80
Total 2890 Other Support Services Central				\$269,062.65

LEA : 124157802 Tredyffrin-Easttown SD

Printed 11/13/2020 9:07:34 AM

General Fund (10)

2900 Other Support Services	<u>Elementary</u>	<u>Secondary</u>	<u>Federal</u>	<u>Total</u>
500 <u>Other Purchased Services</u>				
595 IU Payments By Withholding				71,256.02
Total Other Purchased Services				\$71,256.02
Total 2900 Other Support Services				\$71,256.02

LEA : 124157802 Tredyffrin-Easttown SD

Printed 11/13/2020 9:07:34 AM

General Fund (10)

2910 Support Services Not Listed Elsewhere In the 2000 Series

Elementary Secondary Federal Total

500 Other Purchased Services

595 IU Payments By Withholding 71,256.02

Total Other Purchased Services \$71,256.02

Total 2910 Support Services Not Listed Elsewhere In the 2000 Series \$71,256.02

LEA : 124157802 Tredyffrin-Easttown SD

Printed 11/13/2020 9:07:39 AM

General Fund (10)	
3000 Operation of Non-Instructional Services	<u>Total</u>
100 <u>Personnel Services – Salaries</u>	
100 Personnel Services – Salaries	887,933.93
Total Personnel Services – Salaries	\$887,933.93
200 <u>Personnel Services – Employee Benefits</u>	
210 Group Insurance – Contracted Provider	2,909.37
220 Social Security Contributions	66,469.22
230 PSERS Retirement Contributions	287,727.08
250 Unemployment Compensation	59.67
260 Workers' Compensation	241.95
Total Personnel Services – Employee Benefits	\$357,407.29
300 <u>Purchased Professional and Technical Services</u>	
329 Professional Educational Services – Other	19,347.18
340 Technical Services	175,875.25
Total Purchased Professional and Technical Services	\$195,222.43
400 <u>Purchased Property Services</u>	
430 Repairs and Maintenance Services	9,329.39
440 Rentals	36,625.78
Total Purchased Property Services	\$45,955.17
500 <u>Other Purchased Services</u>	
510 Student Transportation Services	128,245.87
520 Insurance – General	31,360.00
580 Travel	3,195.14
Total Other Purchased Services	\$162,801.01
600 <u>Supplies</u>	
610 General Supplies	186,518.57
Total Supplies	\$186,518.57
800 <u>Other Objects</u>	
810 Dues and Fees	26,893.22
Total Other Objects	\$26,893.22
Total 3000 Operation of Non-Instructional Services	\$1,862,731.62

LEA : 124157802 Tredyffrin-Easttown SD

Printed 11/13/2020 9:07:39 AM

General Fund (10)				
3200 Student Activities	<u>Elementary</u>	<u>Secondary</u>	<u>Federal</u>	<u>Total</u>
100 <u>Personnel Services – Salaries</u>				
100 Personnel Services – Salaries				887,933.93
Total Personnel Services – Salaries				\$887,933.93
200 <u>Personnel Services – Employee Benefits</u>				
210 Group Insurance – Contracted Provider				2,909.37
220 Social Security Contributions				66,469.22
230 PSERS Retirement Contributions				287,727.08
250 Unemployment Compensation				59.67
260 Workers' Compensation				241.95
Total Personnel Services – Employee Benefits				\$357,407.29
300 <u>Purchased Professional and Technical Services</u>				
329 Professional Educational Services – Other				19,347.18
340 Technical Services				175,875.25
Total Purchased Professional and Technical Services				\$195,222.43
400 <u>Purchased Property Services</u>				
430 Repairs and Maintenance Services				9,329.39
440 Rentals				36,625.78
Total Purchased Property Services				\$45,955.17
500 <u>Other Purchased Services</u>				
510 Student Transportation Services				128,245.87
520 Insurance – General				31,360.00
580 Travel				3,195.14
Total Other Purchased Services				\$162,801.01
600 <u>Supplies</u>				
610 General Supplies				186,518.57
Total Supplies				\$186,518.57
800 <u>Other Objects</u>				
810 Dues and Fees				26,893.22
Total Other Objects				\$26,893.22
Total 3200 Student Activities				\$1,862,731.62

LEA : 124157802 Tredyffrin-Easttown SD

Printed 11/13/2020 9:07:48 AM

General Fund (10)

5000 Other Expenditures and Financing Uses

Total

800	<u>Other Objects</u>	
830	Interest	3,163,747.55
880	Refunds of Prior Years' Receipts	36,119.82
Total Other Objects		\$3,199,867.37
900	<u>Other Uses of Funds</u>	
910	Redemption of Principal	3,575,000.00
932	Capital Reserve Fund Transfers Applicable To Fund 32	5,200,000.00
Total Other Uses of Funds		\$8,775,000.00
Total 5000 Other Expenditures and Financing Uses		\$11,974,867.37

LEA : 124157802 Tredyffrin-Easttown SD

Printed 11/13/2020 9:07:48 AM

General Fund (10)

5100 Debt Service / Other Expenditures and Financing Uses	<u>Elementary</u>	<u>Secondary</u>	<u>Federal</u>	<u>Total</u>
800 <u>Other Objects</u>				
830 Interest				3,163,747.55
880 Refunds of Prior Years' Receipts				36,119.82
Total Other Objects				\$3,199,867.37
900 <u>Other Uses of Funds</u>				
910 Redemption of Principal				3,575,000.00
Total Other Uses of Funds				\$3,575,000.00
Total 5100 Debt Service / Other Expenditures and Financing Uses				\$6,774,867.37

LEA : 124157802 Tredyffrin-Easttown SD

Printed 11/13/2020 9:07:48 AM

General Fund (10)

5110 Debt Service	<u>Elementary</u>	<u>Secondary</u>	<u>Federal</u>	<u>Total</u>
800 <u>Other Objects</u>				
830 Interest				3,163,747.55
Total Other Objects				\$3,163,747.55
900 <u>Other Uses of Funds</u>				
910 Redemption of Principal				3,575,000.00
Total Other Uses of Funds				\$3,575,000.00
Total 5110 Debt Service				\$6,738,747.55

LEA : 124157802 Tredyffrin-Easttown SD

Printed 11/13/2020 9:07:48 AM

General Fund (10)

5130 Refund of Prior Year Revenues / Receipts	<u>Elementary</u>	<u>Secondary</u>	<u>Federal</u>	<u>Total</u>
800 <u>Other Objects</u>				
880 Refunds of Prior Years' Receipts				36,119.82
Total Other Objects				\$36,119.82
Total 5130 Refund of Prior Year Revenues / Receipts				\$36,119.82

LEA : 124157802 Tredyffrin-Easttown SD

Printed 11/13/2020 9:07:48 AM

General Fund (10)

5200 Interfund Transfers – Out	<u>Elementary</u>	<u>Secondary</u>	<u>Federal</u>	<u>Total</u>
900 <u>Other Uses of Funds</u>				
932 Capital Reserve Fund Transfers Applicable To Fund 32				5,200,000.00
Total Other Uses of Funds				\$5,200,000.00
Total 5200 Interfund Transfers – Out				\$5,200,000.00

LEA : 124157802 Tredyffrin-Easttown SD

Printed 11/13/2020 9:07:48 AM

General Fund (10)

5230 Capital Projects Fund Transfers	<u>Elementary</u>	<u>Secondary</u>	<u>Federal</u>	<u>Total</u>
900 <u>Other Uses of Funds</u>				
932 Capital Reserve Fund Transfers Applicable To Fund 32				5,200,000.00
Total Other Uses of Funds				\$5,200,000.00
Total 5230 Capital Projects Fund Transfers				\$5,200,000.00

LEA : 124157802 Tredyffrin-Easttown SD

Printed 11/13/2020 9:07:44 AM

Other Capital Projects Fund (39)

4000 Facilities Acquisition, Construction and Improvement Services		<u>Total</u>
100 <u>Personnel Services – Salaries</u>		
100 Personnel Services – Salaries	11,185.03	
Total Personnel Services – Salaries	\$11,185.03	
300 <u>Purchased Professional and Technical Services</u>		
390 Other Purchased Professional and Technical Services	2,506,148.68	
Total Purchased Professional and Technical Services	\$2,506,148.68	
400 <u>Purchased Property Services</u>		
430 Repairs and Maintenance Services	9,135,790.21	
450 Construction Services	715,291.40	
Total Purchased Property Services	\$9,851,081.61	
700 <u>Property</u>		
790 Other Property	132,456.98	
Total Property	\$132,456.98	
Total 4000 Facilities Acquisition, Construction and Improvement Services	\$12,500,872.30	

LEA : 124157802 Tredyffrin-Easttown SD

Printed 11/13/2020 9:07:44 AM

Other Capital Projects Fund (39)

4600 Existing Building Improvement Services	<u>Elementary</u>	<u>Secondary</u>	<u>Federal</u>	<u>Total</u>
100 <u>Personnel Services – Salaries</u>				
100 Personnel Services – Salaries				11,185.03
Total Personnel Services – Salaries				\$11,185.03
300 <u>Purchased Professional and Technical Services</u>				
390 Other Purchased Professional and Technical Services				2,506,148.68
Total Purchased Professional and Technical Services				\$2,506,148.68
400 <u>Purchased Property Services</u>				
430 Repairs and Maintenance Services				9,135,790.21
450 Construction Services				715,291.40
Total Purchased Property Services				\$9,851,081.61
700 <u>Property</u>				
790 Other Property				132,456.98
Total Property				\$132,456.98
Total 4600 Existing Building Improvement Services				\$12,500,872.30

LEA : 124157802 Tredyffrin-Easttown SD

Printed 11/13/2020 9:08:07 AM

	<u>General Fund(10)</u>	<u>Student Sponsored Activity Fund(21)</u>	<u>Public Purpose Trust(27)</u>	<u>Other Compt Approved (28)</u>	<u>Athletic / Activity(29)</u>
1000 <u>Instruction</u>					
1100 Regular Programs - Elementary / Secondary	64,055,356.19				
1200 Special Programs - Elementary / Secondary	26,604,238.41				
1300 Vocational Education	643,503.00				
1400 Other Instructional Programs - Elementary / Secondary	51,189.68				
Total Instruction	\$91,354,287.28				
2000 <u>Support Services</u>					
2100 Support Services - Students	5,466,593.43				
2200 Support Services - Instructional Staff	4,006,207.69				
2300 Support Services - Administration	8,773,742.34				
2400 Support Services - Pupil Health	1,414,467.80				
2500 Support Services - Business	1,338,333.43				
2600 Operation and Maintenance of Plant Services	11,393,355.06				
2700 Student Transportation Services	7,115,360.22				
2800 Support Services - Central	3,554,620.95				
2900 Other Support Services	71,256.02				
Total Support Services	\$43,133,936.94				
3000 <u>Operation of Non-Instructional Services</u>					
3200 Student Activities	1,862,731.62				
Total Operation of Non-Instructional Services	\$1,862,731.62				
4000 <u>Facilities Acquisition, Construction and Improvement Services</u>					
4600 Existing Building Improvement Services					
Total Facilities Acquisition, Construction and Improvement Services					
5000 <u>Other Expenditures and Financing Uses</u>					
5100 Debt Service / Other Expenditures and Financing Uses	6,774,867.37				
5200 Interfund Transfers - Out	5,200,000.00				
Total Other Expenditures and Financing Uses	\$11,974,867.37				
TOTAL ACTUAL EXPENDITURES & OTHER FINANCING USES	\$148,325,823.21				

LEA : 124157802 Tredyffrin-Easttown SD

Printed 11/13/2020 9:08:07 AM

	<u>Capital Reserve (690.1850)(31)</u>	<u>Capital Reserve (1431)(32)</u>	<u>Other Capital Projects Fund(39)</u>	<u>Debt Service(40)</u>	<u>Permanent(90)</u>
1000 <u>Instruction</u>					
1100 Regular Programs - Elementary / Secondary					
1200 Special Programs - Elementary / Secondary					
1300 Vocational Education					
1400 Other Instructional Programs - Elementary / Secondary					
Total Instruction					
2000 <u>Support Services</u>					
2100 Support Services - Students					
2200 Support Services - Instructional Staff					
2300 Support Services - Administration					
2400 Support Services - Pupil Health					
2500 Support Services - Business					
2600 Operation and Maintenance of Plant Services					
2700 Student Transportation Services					
2800 Support Services - Central					
2900 Other Support Services					
Total Support Services					
3000 <u>Operation of Non-Instructional Services</u>					
3200 Student Activities					
Total Operation of Non-Instructional Services					
4000 <u>Facilities Acquisition, Construction and Improvement Services</u>					
4600 Existing Building Improvement Services			12,500,872.30		
Total Facilities Acquisition, Construction and Improvement Services			\$12,500,872.30		
5000 <u>Other Expenditures and Financing Uses</u>					
5100 Debt Service / Other Expenditures and Financing Uses					
5200 Interfund Transfers - Out					
Total Other Expenditures and Financing Uses					
TOTAL ACTUAL EXPENDITURES & OTHER FINANCING USES			\$12,500,872.30		

LEA : 124157802 Tredyffrin-Easttown SD

Printed 11/13/2020 9:08:07 AM

	<u>Total</u>
1000 <u>Instruction</u>	
1100 Regular Programs - Elementary / Secondary	64,055,356.19
1200 Special Programs - Elementary / Secondary	26,604,238.41
1300 Vocational Education	643,503.00
1400 Other Instructional Programs - Elementary / Secondary	51,189.68
Total Instruction	\$91,354,287.28
2000 <u>Support Services</u>	
2100 Support Services - Students	5,466,593.43
2200 Support Services - Instructional Staff	4,006,207.69
2300 Support Services - Administration	8,773,742.34
2400 Support Services - Pupil Health	1,414,467.80
2500 Support Services - Business	1,338,333.43
2600 Operation and Maintenance of Plant Services	11,393,355.06
2700 Student Transportation Services	7,115,360.22
2800 Support Services - Central	3,554,620.95
2900 Other Support Services	71,256.02
Total Support Services	\$43,133,936.94
3000 <u>Operation of Non-Instructional Services</u>	
3200 Student Activities	1,862,731.62
Total Operation of Non-Instructional Services	\$1,862,731.62
4000 <u>Facilities Acquisition, Construction and Improvement Services</u>	
4600 Existing Building Improvement Services	12,500,872.30
Total Facilities Acquisition, Construction and Improvement Services	\$12,500,872.30
5000 <u>Other Expenditures and Financing Uses</u>	
5100 Debt Service / Other Expenditures and Financing Uses	6,774,867.37
5200 Interfund Transfers - Out	5,200,000.00
Total Other Expenditures and Financing Uses	\$11,974,867.37
TOTAL ACTUAL EXPENDITURES & OTHER FINANCING USES	\$160,826,695.51

LEA : 124157802 Tredyffrin-Easttown SD

Printed 11/13/2020 9:08:18 AM

PSERS Salary Data (Salary Data should relate to the General Fund only)

Amount	Description	Amount
	Total Salary Base for salaries subject to PSERS withholding	54,889,611.79
	Total Federally Funded salaries subject to PSERS withholding	315,250.47

Title I Expenditure Data

Amount	Description	Amount
	Expenditures Funded with Current Title I Funds	236,998.00
	Expenditures Funded with Carry over Title I Funds	
Total Title I Expenditure Data		\$236,998.00

Benefits for Staff Relative to Collective Bargaining Agreements

	OBJECT	COVERED	NOT COVERED	TOTAL
10 General Fund				
	211 Medical Insurance			
	212 Dental Insurance			
	215 Eye Care Insurance			
	216 Prescription Insurance			
	271 Self-Insurance Medical Benefits	6,950,158.00	581,286.00	7,531,444.00
	272 Self-Insurance Dental Benefits	597,593.00	49,981.00	647,574.00
	275 Self-Insurance Eye Care Benefits	110,676.00	9,257.00	119,933.00
	276 Self-Insurance Prescription Benefits	1,899,542.00	158,871.00	2,058,413.00
	FUND TOTAL	\$9,557,969.00	\$799,395.00	\$10,357,364.00
50 Enterprise Fund				
	211 Medical Insurance			
	212 Dental Insurance			
	215 Eye Care Insurance			
	216 Prescription Insurance			
	271 Self-Insurance Medical Benefits	245,481.00	6,271.00	251,752.00
	272 Self-Insurance Dental Benefits	20,003.00	505.00	20,508.00
	275 Self-Insurance Eye Care Benefits	3,707.00	92.00	3,799.00
	276 Self-Insurance Prescription Benefits	70,214.00	2,105.00	72,319.00
	FUND TOTAL	\$339,405.00	\$8,973.00	\$348,378.00
60 Internal Service Fund	No Self Insurance data to report			
	211 Medical Insurance			
	212 Dental Insurance			
	215 Eye Care Insurance			
	216 Prescription Insurance			
	271 Self-Insurance Medical Benefits			
	272 Self-Insurance Dental Benefits			
	275 Self-Insurance Eye Care Benefits			
	276 Self-Insurance Prescription Benefits			
	FUND TOTAL			
Total of All Funds		\$9,897,374.00	\$808,368.00	\$10,705,742.00

LEA : 124157802 Tredyffrin-Easttown SD

Printed 11/13/2020 9:08:27 AM

Function	Special Education (Prior Year)	Nonspecial Education (Prior Year)	Total (Prior Year)	Special Education (Current Year)	Nonspecial Education (Current Year)	Total (Current Year)
2120 Guidance Services	561,162.00	3,447,138.02	4,008,300.02	582,452.92	3,577,925.06	4,160,377.98
2140 Psychological Services						
2150 Speech Pathology and Audiology Services	885.33	16,821.18	17,706.51	254.05	4,826.87	5,080.92
2160 Social Work Services						
2260 Instruction and Curriculum Development Services	231,418.67	1,421,571.82	1,652,990.49	216,376.12	1,329,167.63	1,545,543.75
2350 Legal and Accounting Services	163,782.85	304,168.15	467,951.00	198,581.00	264,966.23	463,547.23
2420 Medical Services		301,649.87	301,649.87		10,723.50	10,723.50
2440 Nursing Services	5,507.74	31,210.56	36,718.30	46,267.23	262,180.97	308,448.20
2700 Student Transportation Services	2,325,650.61	4,942,028.09	7,267,678.70	2,059,789.35	3,404,198.77	5,463,988.12
Total	\$3,288,407.20	\$10,464,587.69	\$13,752,994.89	\$3,103,720.67	\$8,853,989.03	\$11,957,709.70

LEA : 124157802 Tredyffrin-Easttown SD

(PRINCIPAL AMOUNTS ONLY)								
<u>GOVERNMENTAL FUNDS/ ACTIVITIES</u>	Short-Term Borrowing	General Obligation Bonds/Notes	Authority Building Obligations	Other Long-Term Debt	Other Post- Employment Benefits (OPEB)	Compensated Absences	Net Pension Liability	Total
1. Debt at Beginning of Fiscal Year		72,575,000.00			18,150,071.00	7,992,765.00	204,716,000.00	303,433,836.00
2. Additional Debt Incurred During Year						838,142.00		838,142.00
3. Retirements and Repayments		3,575,000.00			129,329.00	851,713.00	6,679,565.00	11,235,607.00
4. Debt at End of Fiscal Year		69,000,000.00			18,020,742.00	7,979,194.00	198,036,435.00	293,036,371.00
5. Accreted Interest at End Of Fiscal Year								
6. Total Debt and Accreted Interest		69,000,000.00			18,020,742.00	7,979,194.00	198,036,435.00	293,036,371.00
7. Current Portion P&I - Due within 1 year		6,748,296.00				159,115.00		6,907,411.00
8. Interest Paid during current fiscal year		3,163,747.39						3,163,747.39

(PRINCIPAL AMOUNTS ONLY)								
<u>PROPRIETARY FUNDS</u>	Short-Term Borrowing	General Obligation Bonds/Notes	Authority Building Obligations	Other Long-Term Debt	Other Post- Employment Benefits (OPEB)	Compensated Absences	Net Pension Liability	Total
1. Debt at Beginning of Fiscal Year					330,080.00	66,302.00	3,722,000.00	4,118,382.00
2. Additional Debt Incurred During Year					272,298.00			272,298.00
3. Retirements and Repayments						12,458.00	593,221.00	605,679.00
4. Debt at End of Fiscal Year					602,378.00	53,844.00	3,128,779.00	3,785,001.00
5. Accreted Interest at End Of Fiscal Year								
6. Total Debt and Accreted Interest					602,378.00	53,844.00	3,128,779.00	3,785,001.00
7. Current Portion P&I - Due within 1 year								
8. Interest Paid during current fiscal year								

LEA : 124157802 Tredyffrin-Easttown SD

Printed 11/13/2020 9:08:34 AM

Total Principal and Interest Payments Made by Your School - All Funds

Function	Fund		Principal (910)	Principal (920)	Interest (830)	Total (Principal +Interest)	Misc Other Uses (990)
5110	10	General Fund	3,575,000.00		3,163,747.55	6,738,747.55	
5110	20	Special Revenue Funds					
5110	30	Capital Projects Funds					
5110	40	Debt Service Fund					
5110	90	Permanent Fund					
5120	10	General Fund					
5120	20	Special Revenue Funds					
5120	30	Capital Projects Funds					
5120	40	Debt Service Fund					
Total Debt Payments - Governmental Funds			\$3,575,000.00		\$3,163,747.55	\$6,738,747.55	

Function	Fund		Principal (910)	Principal (920)	Interest (830)	Total (Principal +Interest)
5110	50	Enterprise Fund				
5110	60	Internal Service Fund				
5120	50	Enterprise Fund				
5120	60	Internal Service Fund				
Total Debt Payments - Proprietary Funds						

LEA : 124157802 Tredyffrin-Easttown SD

Printed 11/13/2020 9:08:34 AM

Debt Details
Governmental Funds/ Activities

Debt Category	Debt Issue Date (MM/YYYY)	Principal Amounts Only				Current Portion Due Within One Year (Principal and Interest)	Interest Paid During Fiscal Year
		Debt at Beginning of Fiscal Year	Additions	Reductions / Repayments	Debt at End of Fiscal Year		
General Obligation Bonds/Notes – CIB	02/2019	26,915,000.00		5,000.00	26,910,000.00	1,182,277.00	1,146,109.00
General Obligation Bonds/Notes – CIB	10/2016	12,805,000.00		5,000.00	12,800,000.00	1,982,000.00	512,071.00
General Obligation Bonds/Notes – CIB	03/2015	22,425,000.00		55,000.00	22,370,000.00	1,038,019.00	984,067.39
General Obligation Bonds/Notes – CIB	09/2010	10,430,000.00		3,510,000.00	6,920,000.00	2,546,000.00	521,500.00
Compensated Absences		7,992,765.00	838,142.00	851,713.00	7,979,194.00	159,115.00	
Other Post-Employment Benefits (OPEB)		18,150,071.00		129,329.00	18,020,742.00		
Net Pension Liability		204,716,000.00		6,679,565.00	198,036,435.00		
Totals for Debt Entered:		\$303,433,836.00	\$838,142.00	\$11,235,607.00	\$293,036,371.00	\$6,907,411.00	\$3,163,747.39

Bond Details
Proprietary Funds

Debt Category	Debt Issue Date (MM/YYYY)	Principal Amounts Only				Current Portion Due Within One Year (Principal and Interest)	Interest Paid During Fiscal Year
		Debt at Beginning of Fiscal Year	Additions	Reductions / Repayments	Debt at End of Fiscal Year		
Compensated Absences		66,302.00		12,458.00	53,844.00		
Other Post-Employment Benefits (OPEB)		330,080.00	272,298.00		602,378.00		
Net Pension Liability		3,722,000.00		593,221.00	3,128,779.00		
Totals for Debt Entered:		\$4,118,382.00	\$272,298.00	\$605,679.00	\$3,785,001.00		

LEA : 124157802 Tredyffrin-Easttown SD

Printed 11/13/2020 9:08:39 AM

General Fund (10)

Section 1: Tuition/Purchased Services as Reported within Expenditure Detail	Amount
Tuition Reported in General Fund Expenditures 1000-560	4,820,827.91
Purchased Services in General Fund Expenditures 1000-594 and 1000-597	4,011.33
Section 1 Total	\$4,824,839.24

Section 2: Tuition Paid to Institution Types During Fiscal Year	Tuition Paid For Nonspecial Education	Tuition Paid For Special Education	Total
1 1306 Institutions		153,626.34	153,626.34
2 Institutionalized Children's Programs		4,011.33	4,011.33
3 Juveniles Incarcerated in Adult Facilities			
4 Residential Treatment Facilities			
5 Other Local Education Agencies			
6 Brick and Mortar Charter Schools	74,919.31		74,919.31
7 Cyber Charter Schools	535,314.79		535,314.79
8 Career and Technology Centers		643,503.00	643,503.00
9 Approved Private Schools		1,518,660.95	1,518,660.95
10 PA Chartered Schools for the Deaf and Blind			
11 Private Residential Rehabilitative Institutions		26.85	26.85
12 Juvenile Detention Centers			
13 Special Program Jointures			
14 Other Tuition Not Included Elsewhere In This Section		1,894,776.67	1,894,776.67
Section 2 Total	\$610,234.10	\$4,214,605.14	\$4,824,839.24

LEA : 124157802 Tredyffrin-Easttown SD

Printed 11/13/2020 9:08:44 AM

Food Service / Cafeteria Operations Fund (51)

3000 Operation of Non-Instructional Services	Total
100 <u>Personnel Services – Salaries</u>	
100 Personnel Services – Salaries	958,492.23
Total Personnel Services – Salaries	\$958,492.23
200 <u>Personnel Services – Employee Benefits</u>	
210 Group Insurance – Contracted Provider	630,179.93
220 Social Security Contributions	728.69
250 Unemployment Compensation	43.76
Total Personnel Services – Employee Benefits	\$630,952.38
400 <u>Purchased Property Services</u>	
430 Repairs and Maintenance Services	32,212.37
440 Rentals	114.25
Total Purchased Property Services	\$32,326.62
500 <u>Other Purchased Services</u>	
580 Travel	234.22
Total Other Purchased Services	\$234.22
600 <u>Supplies</u>	
610 General Supplies	49,875.34
630 Food	739,329.42
640 Books and Periodicals	6,555.00
Total Supplies	\$795,759.76
700 <u>Property</u>	
740 Depreciation	64,087.44
Total Property	\$64,087.44
800 <u>Other Objects</u>	
810 Dues and Fees	2,187.99
Total Other Objects	\$2,187.99
Total 3000 Operation of Non-Instructional Services	\$2,484,040.64

LEA : 124157802 Tredyffrin-Easttown SD

Printed 11/13/2020 9:08:44 AM

Food Service / Cafeteria Operations Fund (51)

3100 Food Services	<u>Elementary</u>	<u>Secondary</u>	<u>Federal</u>	<u>Total</u>
100 <u>Personnel Services – Salaries</u>				
100 Personnel Services – Salaries				958,492.23
Total Personnel Services – Salaries				\$958,492.23
200 <u>Personnel Services – Employee Benefits</u>				
210 Group Insurance – Contracted Provider				630,179.93
220 Social Security Contributions				728.69
250 Unemployment Compensation				43.76
Total Personnel Services – Employee Benefits				\$630,952.38
400 <u>Purchased Property Services</u>				
430 Repairs and Maintenance Services				32,212.37
440 Rentals				114.25
Total Purchased Property Services				\$32,326.62
500 <u>Other Purchased Services</u>				
580 Travel				234.22
Total Other Purchased Services				\$234.22
600 <u>Supplies</u>				
610 General Supplies				49,875.34
630 Food				739,329.42
640 Books and Periodicals				6,555.00
Total Supplies				\$795,759.76
700 <u>Property</u>				
740 Depreciation				64,087.44
Total Property				\$64,087.44
800 <u>Other Objects</u>				
810 Dues and Fees				2,187.99
Total Other Objects				\$2,187.99
Total 3100 Food Services				\$2,484,040.64

	<u>Food Service(51)</u>	<u>Child Care Operations(52)</u>	<u>Other Enterprise(58)</u>	<u>Internal Service(60)</u>	<u>Total</u>
3000 <u>Operation of Non-Instructional Services</u>					
3100 Food Services	2,484,040.64				2,484,040.64
Total Operation of Non-Instructional Services	\$2,484,040.64				\$2,484,040.64
TOTAL ACTUAL EXPENDITURES & OTHER FINANCING USES	\$2,484,040.64				\$2,484,040.64

LEA : 124157802 Tredyffrin-Easttown SD

Printed 11/13/2020 9:08:59 AM

Fund	School	School Number	Local Personnel	Local Nonpersonnel	State Personnel	State Nonpersonnel	Federal Personnel	Federal Nonpersonnel	Total	Explanation
10										
	Beaumont El Sch	4690	5,780,287.97	1,348,389.67	1,035,885.49	241,644.93	51,049.00	11,908.39	8,469,165.45	
	Conestoga SHS	1423	26,458,993.55	6,573,600.34	4,741,716.60	1,178,055.01	233,674.39	58,055.20	39,244,095.09	
	Devon El Sch	1434	5,484,872.50	1,251,846.57	982,944.08	224,343.44	48,440.02	11,055.77	8,003,502.38	
	Hillside El Sch	1439	5,200,135.13	1,228,840.90	931,916.29	220,220.59	45,925.34	10,852.59	7,637,890.84	
	New Eagle El Sch	1440	5,529,285.72	1,326,488.52	990,903.37	237,720.03	48,832.26	11,714.97	8,144,944.87	
	Tredyffrin-Easttown MS	1421	13,958,038.10	3,021,687.74	2,501,420.20	541,516.70	123,271.36	26,686.24	20,172,620.34	
	Valley Forge El Sch	1438	5,854,468.23	1,436,029.35	1,049,179.33	257,350.84	51,704.13	12,682.39	8,661,414.27	
	Valley Forge MS	4689	14,039,740.88	3,170,632.20	2,516,062.16	568,209.04	123,992.92	28,001.65	20,446,638.85	
Total			82,305,822.08	19,357,515.29	14,750,027.52	3,469,060.58	726,889.42	170,957.20	120,780,272.09	